

Autodesk®
Smoke® 2010 SP1

A Discreet® Systems product

Autodesk®
Backdraft® Conform 2010 SP1

Release Notes

© 2009 Autodesk, Inc. All rights reserved. Except as otherwise permitted by Autodesk, Inc., this publication, or parts thereof, may not be reproduced in any form, by any method, for any purpose.

Certain materials included in this publication are reprinted with the permission of the copyright holder.

Autodesk® Inferno®, Autodesk® Flame®, Autodesk® Flint®, Autodesk® Fire®, Autodesk® Smoke®, Autodesk® Backdraft® Conform software

Portions relating to MXF-SDK was developed by Media, Objects and Gadgets – Soluções de Software e Hardware, S.A. (<http://www.mog-solutions.com>) in co-operation with Institut für Rundfunktechnik GmbH (<http://www.irt.de>).

Portions powered by Automatic Duck. © 2006 Automatic Duck, Inc. All rights reserved.

Portions relating to “dslib” C/C++ Copyright 1988-1989 Eugene Dronek and Rich Morin.

Autodesk® Flare™ software

Portions relating to MXF-SDK was developed by Media, Objects and Gadgets – Soluções de Software e Hardware, S.A. (<http://www.mog-solutions.com>) in co-operation with Institut für Rundfunktechnik GmbH (<http://www.irt.de>).

Portions powered by Automatic Duck. © 2006 Automatic Duck, Inc. All rights reserved.

Portions relating to “dslib” C/C++ Copyright 1988-1989 Eugene Dronek and Rich Morin.

Portions relating to MPEG Layer- 3; supply of this product does not convey a license under the relevant intellectual property of Thomson multimedia and/or Fraunhofer Gesellschaft nor imply any right to use this product in any finished end user or ready-to-use final product. An independent license for such use is required. For details, please visit <http://www.mp3licensing.com>.

Autodesk® SystemCentral™ software

Adobe® Flash® Player. Copyright © 1996-2006 Adobe Systems Incorporated. All Rights Reserved.

Autodesk® Inferno®, Autodesk® Flame®, Autodesk® Flint®, Autodesk® Smoke®, Autodesk® Backdraft® Conform

Portions relating to MPEG Layer- 3; supply of this product does not convey a license under the relevant intellectual property of Thomson multimedia and/or Fraunhofer Gesellschaft nor imply any right to use this product in any finished end user or ready-to-use final product. An independent license for such use is required. For details, please visit <http://www.mp3licensing.com>.

Trademarks

The following are registered trademarks or trademarks of Autodesk, Inc., in the USA and other countries: 3DEC (design/logo), 3December, 3December.com, 3ds Max, ADI, Alias, Alias (swirl design/logo), AliasStudio, AliasWavefront (design/logo), ATC, AUGI, AutoCAD, AutoCAD Learning Assistance, AutoCAD LT, AutoCAD Simulator, AutoCAD SQL Extension, AutoCAD SQL Interface, Autodesk, Autodesk Envision, Autodesk Insight, Autodesk Intent, Autodesk Inventor, Autodesk Map, Autodesk MapGuide, Autodesk Streamline, AutoLISP, AutoSnap, AutoSketch, AutoTrack, Backdraft, Built with ObjectARX (logo), Burn, Buzzsaw, CAICE, Can You Imagine, Character Studio, Cinestream, Civil 3D, Cleaner, Cleaner Central, ClearScale, Colour Warper, Combustion, Communication Specification, Constructware, Content Explorer, Create>what’s>Next> (design/logo), Dancing Baby (image), DesignCenter, Design Doctor, Designer’s Toolkit, DesignKids, DesignProf, DesignServer, DesignStudio, DesignStudio (design/logo), Design Web Format, Discreet, DWF, DWG, DWG (logo), DWG Extreme, DWG TrueConvert, DWG TrueView, DXF, Ecotect, Exposure, Extending the Design Team, Face Robot, FBX, Filmbox, Fire, Flame, Flint, FMDesktop, Freewheel, Frost, GDX Driver, Gmax, Green Building Studio, Heads-up Design, Heidi, HumanIK, IDEA Server, i-drop, ImageModeler, iMOUT, Incinerator, Inferno, Inventor, Inventor LT, Kaydara, Kaydara (design/logo), Kynapse, Kynogon, LandXplorer, LocationLogic, Lustre, Matchmover, Maya, Mechanical Desktop, Moonbox, MotionBuilder, Movimento, Mudbox, NavisWorks, ObjectARX, ObjectDBX, Open Reality, Opticore, Opticore Opus, PolarSnap, PortfolioWall, Powered with Autodesk Technology, Productstream, ProjectPoint, ProMaterials, RasterDWG, Reactor, RealDWG, Real-time Roto, REALVIZ, Recognize, Render Queue, Retimer, Reveal, Revit, Showcase, ShowMotion, SketchBook, Smoke, Softimage, Softimage|XSI (design/logo), SteeringWheels, Stitcher, Stone, StudioTools, Topobase, Toxik, TrustedDWG, ViewCube, Visual, Visual Construction, Visual Drainage, Visual Landscape, Visual Survey, Visual Toolbox, Visual LISP, Voice Reality, Volo, Vtour, Wire, Wiretap, WiretapCentral, XSI, and XSI (design/logo).

The following are registered trademarks or trademarks of Autodesk Canada Co. in the USA and/or Canada and other countries: Backburner, Multi-Master Editing, River, and Sparks.

The following are registered trademarks or trademarks of Moldflow Corp. in the USA and/or other countries: Moldflow MPA, MPA (design/logo), Moldflow Plastics Advisers, MPI, MPI (design/logo), Moldflow Plastics Insight, MPX, MPX (design/logo), Moldflow Plastics Xpert.

Adobe and Flash are either trademarks or registered trademarks in the United States and/or countries. Automatic Duck and the duck logo are trademarks of Automatic Duck, Inc. Ffmpeg is a trademark of Fabrice Bellard, originator of the Ffmpeg project. Python is a registered trademark of Python Software Foundation. All other brand names, product names or trademarks belong to their respective holders.

Disclaimer

THIS PUBLICATION AND THE INFORMATION CONTAINED HEREIN IS MADE AVAILABLE BY AUTODESK, INC. "AS IS." AUTODESK, INC. DISCLAIMS ALL WARRANTIES, EITHER EXPRESS OR IMPLIED, INCLUDING BUT NOT LIMITED TO ANY IMPLIED WARRANTIES OF MERCHANTABILITY OR FITNESS FOR A PARTICULAR PURPOSE REGARDING THESE MATERIALS.

Published by: Autodesk, Inc.
111 McInnis Parkway
San Rafael, CA 94903, USA

Title: Autodesk Smoke and Autodesk Backdraft Conform 2010 SP1 Release Notes
Document Version: 2
Date: April 22, 2009

Contents

- Chapter 1 Introduction 1**
 - New in these Release Notes 1
 - About these Release Notes 1
 - Related Documentation 2
 - Contacting Autodesk 2

- Chapter 2 Service Pack Requirements and Installation 3**
 - Quick Upgrade Workflow 3
 - System Requirements 4
 - Verifying and Upgrading the DKU 5
 - Verifying and Upgrading the AJA OEM 2K Firmware 6
 - Licensing 7
 - Compatibility 7
 - Uninstalling Visual Effects and Finishing Applications 7
 - Additional Software For this Release 8

- Chapter 3 Important Notes for 2010 SP 1 9**
 - Erratum to the Configuration File Reference Guide: Incorrect Mentions of IBM Platforms 9
 - Cleaning up Missing Frames Before Upgrading to the 2010 Release 10
 - The 2010 Release Cannot Coexist with Older Releases on the Same Workstation 10
 - Irrelevant Error Message When Starting the Burn License Server 10
 - Support for New Timings 10
 - FBX 2009.3 Support 11
 - New Application Linux Privileges 11
 - Running the changePermissions Script 12
 - Setting a Custom UID and GID for the Application Linux Account 12
 - Smoke/Flame: Preparing Timelines for Autodesk Lustre 13
 - Troubleshooting Missing Frames 13
 - Sending MTBF Reports to Autodesk 14

Chapter 4	Application Feature Changes	17
	Introduction	17
	Image Data Type Hot Keys	17
	New Sapphire Sparks from GenArts	18
	Colour Decision List Spark	18
	Smoke/Flame: Preparing Timelines for Autodesk Lustre	18
	Batch	19

Introduction

1

Topics in this chapter:

- [New in these Release Notes](#) on page 1
- [About these Release Notes](#) on page 1
- [Related Documentation](#) on page 2
- [Contacting Autodesk](#) on page 2

New in these Release Notes

The following sections are new or have been updated since the previous Release Notes:

- [Erratum to the Configuration File Reference Guide: Incorrect Mentions of IBM Platforms](#) on page 9
- [Quick Upgrade Workflow](#) on page 3

About these Release Notes

This document provides requirements and last-minute system information for the following Autodesk® applications:

- Autodesk Smoke® 2010 SP1
- Autodesk Backdraft® Conform 2010 SP1
- Autodesk Burn® 2010 SP1

Before upgrading your application, read this document thoroughly, as it contains important notes about the current release, including the required *Discreet Kernel Utilities* (DKU) version and AJA OEM 2K firmware version.

- For important notes about this service pack, see [Important Notes for 2010 SP 1](#) on page 9.
- For the DKU version and AJA OEM 2K firmware version required for this service pack see [Verifying and Upgrading the DKU](#) on page 5 and [Verifying and Upgrading the AJA OEM 2K Firmware](#) on page 6.
- For a quick overview of the steps required to upgrade your application to the current service pack, see [Quick Upgrade Workflow](#) on page 3.
- For information on major and minor known issues, as well as issues fixed in this service pack, see the *Autodesk Visual Effects and Finishing 2010 Fixed and Known Bugs* document. You can get the latest version of this document from the Autodesk Web site at <http://www.autodesk.com/me-documentation>.

Related Documentation

This release has documentation that helps you install, configure, and use your product. It is available from your product as a Web-based help system and as PDF files.

- To view the Help from anywhere in the application, press **Ctrl+=**.
- To view PDF documentation from the application, go to the Preferences menu and select a document from the PDF Preference box.

For complete information on viewing PDF documentation and Help, see the “Introduction” chapter of your application User Guide.

For a list of all the latest documentation that is available to you, see:

- www.autodesk.com/smoke-documentation
- www.autodesk.com/backdraftconform-documentation
- www.autodesk.com/burn-documentation

Contacting Autodesk

For Autodesk Media and Entertainment Customer Support, visit <http://www.autodesk.com/support>.

Customer support is also available through your Autodesk reseller. To find a reseller near you, consult the reseller look-up database at <http://www.autodesk.com/resellers>.

Service Pack Requirements and Installation

2

Topics in this chapter:

- [Quick Upgrade Workflow](#) on page 3
- [System Requirements](#) on page 4
- [Verifying and Upgrading the DKU](#) on page 5
- [Verifying and Upgrading the AJA OEM 2K Firmware](#) on page 6
- [Licensing](#) on page 7
- [Compatibility](#) on page 7
- [Uninstalling Visual Effects and Finishing Applications](#) on page 7
- [Additional Software For this Release](#) on page 8

Quick Upgrade Workflow

If you are upgrading your application from a previous release or service pack, consult the following overview of the main upgrade steps.

If this is the first time you are installing an Autodesk Visual Effects and Finishing application, we recommend reading the *Autodesk Visual Effects and Finishing Software Installation Guide* for detailed information on each step in the installation procedure.

To upgrade your application to the current service pack:

- 1 Before beginning the upgrade procedure, read the information in [Important Notes for 2010 SP 1](#) on page 9.
- 2 Make sure your workstation and operating system meet the minimum requirements for the current service pack. See [System Requirements](#) on page 4.
- 3 Open a terminal and log in as root.

- 4 Install the required version of the DKU. See [Verifying and Upgrading the DKU](#) on page 5.
- 5 If your HP workstation is equipped with an AJA OEM 2K board, upgrade the AJA firmware. See [Verifying and Upgrading the AJA OEM 2K Firmware](#) on page 6.
- 6 If you need to change your system date or time, do it **before** installing the new release.
- 7 If you are upgrading from a previous release, make sure there are no missing frames in your previous release clip libraries before performing the upgrade. See [Cleaning up Missing Frames Before Upgrading to the 2010 Release](#) on page 10.
- 8 Perform the following steps to obtain your service pack installation package:
 - Download the application *tar* file from the link provided in the release announcement.
 - Go to the directory where the *tar* file was downloaded, and unpack it by typing:
`tar -zxvf <application_tar_file>`
 The application *tar* file is unpacked into a new directory.
- 9 Go to the application installation directory, for example *Flame_2010_LINUX64_RHEL4*, and start the installation script by typing:
`./INSTALL_<APPLICATION_NAME>`
 The script starts and guides you through the installation process. See the *Autodesk Visual Effects and Finishing Software Installation Guide* for detailed information on each step.
- 10 If you are upgrading from a previous release, run the *copyProjects* utility to copy projects from previous versions of the application to the most recently installed version. See the “Compatibility” topic in the application Help or User Guide for details.

NOTE This step is not necessary if you are upgrading from a service pack of the same application release or extension.

System Requirements

The following table lists the workstations and operating systems supported in this release, as well as the latest certified BIOS version for each workstation.

Workstation	BIOS Version	Operating System
HP xw8600	1.24	Red Hat® Enterprise Linux® WS 4, Update 3 (64-bit)
HP xw9400	3.05	Red Hat Enterprise Linux WS 4, Update 3 (64-bit)
HP xw8400	2.13 for CPU stepping 6F6 2.26 for CPU stepping 6FB	Red Hat Enterprise Linux WS 4, Update 3 (64-bit)

The following table lists the BIOS version and supported operating system versions for HP ProLiant DL160 Burn Render Nodes.

Render Node	BIOS version	Operating System
HP ProLiant DL160 G5	04/09/2008	Red Hat Enterprise Linux WS4 Update 3 (64-bit) or CentOS 4.6 (64-bit)

If you are upgrading from a previous version of your application, you may need to make some minor changes to video I/O connections, or the BIOS of your workstation. See the latest Hardware Setup Guide for your workstation for details and instructions.

If you are upgrading from a 2007, or newer release of a application, an operating system upgrade is not required.

If you are upgrading from a pre-2007 release of a application, all platforms require a fresh installation of the Red Hat Enterprise Linux WS 4 Update 3 operating system. You cannot upgrade to Red Hat Enterprise Linux WS 4 from a previous version.

Install your operating system from Autodesk's 64-bit custom distribution of Red Hat Enterprise Linux Workstation 4 Update 3. This DVD is distributed with your release shipment, and installs the Linux software packages required by Autodesk applications. These applications do not run under the commercial distribution of Red Hat Enterprise Linux.

WARNING A fresh install of Linux erases the contents of the system disk. Before performing the upgrade, archive user settings, project settings, and any media that you want to preserve.

See the *Autodesk Visual Effects and Finishing Red Hat Enterprise Linux Workstation 4 Update 3 Installation and Configuration Guide* for information on installing Linux.

Verifying and Upgrading the DKU

Before installing the current release, upgrade the DKU to the required version.

Consult the following table to identify the required DKU version for your application release.

Autodesk Smoke and Autodesk Backdraft Conform 2010 Version	DKU
2010	4.0.0

To upgrade the DKU:

- 1 Check the currently installed DKU version. As root, open a terminal and type:

```
head -n1 /etc/DKUversion
```

If the DKU version output by the command does not match the version required for the current release, perform the remaining steps in this procedure.

- 2 Download the latest DKU *tar* file from the download link provided in the release announcement.

- 3 Go to the directory where the *tar* file was downloaded, and unpack it by typing:

```
tar -zxvf DKU_<version_number>.tar.gz
```

The DKU *tar* file is unpacked into a new directory.

- 4 Go to the DKU installation directory, for example *DKU_4.0.0*, and launch the DKU installation script:

```
./INSTALL_DKU
```

WARNING If you attempt to install the DKU on an unsupported platform, the installation script only installs a generic configuration. Such a configuration can render your operating system unusable. Never attempt to install the current version of the DKU on unsupported platforms, including older Visual Effects and Finishing systems that are no longer supported in the current release.

- 5 When the DKU installation completes, reboot the system. Type:

```
reboot
```

NOTE After the workstation reboots and until you install the Visual Effects and Finishing application, the Wacom tablet might not behave correctly. Installing the application, then logging out of the KDE desktop and logging back in should eliminate this problem.

Verifying and Upgrading the AJA OEM 2K Firmware

If your HP workstation is equipped with an AJA OEM 2K board, the firmware of the board must be upgraded to use it with the current release of your Visual Effects and Finishing application.

Consult the following table to identify the required AJA firmware version for your service pack.

Autodesk Smoke and Autodesk Backdraft Conform 2010 Version	AJA OEM 2K Firmware
2010	0x73

To verify and upgrade the AJA PCI-X firmware:

- 1 Open a terminal and type:

```
cat /proc/driver/aja
```

If `PCI version` lists a different version than the required one, then perform the following steps to upgrade the firmware.

NOTE Before upgrading the AJA firmware, make sure that you have upgraded the DKU, and that you have restarted the system.

- 2 Go to the `/usr/discreet/DKU/current/Utils/AJA_firmwareUpdate` directory.
- 3 Run the `AJAfw_update` utility to scan the AJA current firmware and, if required, update to the latest firmware version. Type:

```
./AJAfw_update
```

If the utility detects that the firmware and drivers need to be updated, it prompts you to start the update.
- 4 Start the firmware update by typing **Y** and then pressing **Enter**.
While the AJA board firmware and drivers are being updated, your workstation appears to be frozen and your mouse and keyboard do not work. This is normal and indicates that the firmware is being updated. Once the firmware update is complete, you are returned to the terminal.
- 5 Shut down your workstation by typing:

```
shutdown -g0
```

If your workstation does not prompt you to power down, press the power button for 10 seconds to force a power down.
- 6 Disconnect the power cord.
- 7 Wait 10 seconds, reconnect the power cord, then restart your workstation.

NOTE For more details about the AJA firmware procedures, consult the `README` file located in the current directory.

Licensing

As an eligible subscription customer, you will receive a new license for the 2010 version of your product. See the *Autodesk Visual Effects and Finishing Software Installation Guide* for instructions on installing your license code.

Compatibility

Projects and clip libraries created in previous releases are read-only in your application.

To access media in projects created in previous releases, you must first create new projects in the current release. Then, you must transfer the media from your old projects to the new ones using the Network panel in the Clip Library (Autodesk® Wire®).

There is a tool that copies your old projects to new projects, which can ease the process of migrating many projects to the new version. For details, see the “Compatibility” topic of your application Help or User Guide.

Previous releases cannot read clip libraries from this release.

Autodesk recommends archiving your media and project data before you upgrade.

Uninstalling Visual Effects and Finishing Applications

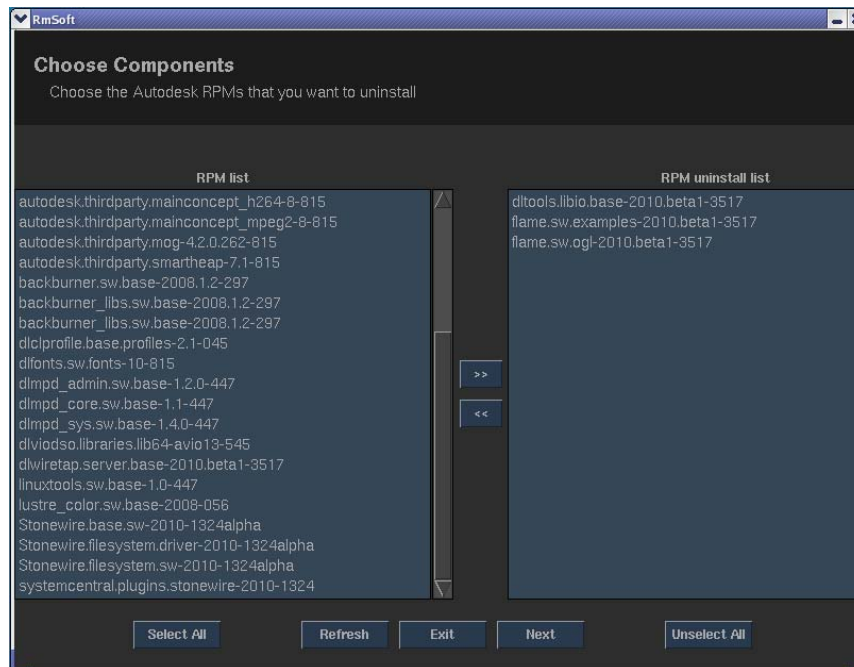
The *rmsoft* utility enables you to easily uninstall Visual Effects and Finishing applications from your workstation.

To uninstall applications using *rmsoft*:

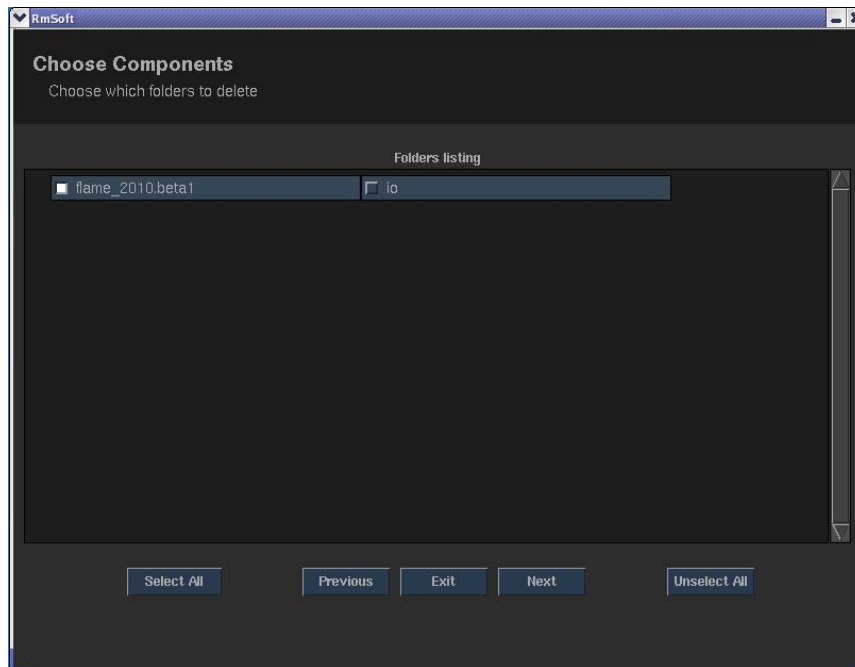
- 1 If you are logged in as the application user in KDE, log out.
- 2 Log in as root, open a terminal, and type:

rmsoft

The *rmsoft* user interface appears.



- 3 In the RPM list, select the RPM packages you want to uninstall and use the arrow buttons to move them to the RPM uninstall list.
- 4 Click Next.
The Choose folders window appears.



- 5 Choose which application directories to delete from the `/usr/discreet` directory, and click Next.
A confirmation dialog appears.
- 6 Click OK to confirm the removal of the selected packages and directories.
The uninstallation starts and *rmsoft* displays details on the process.
- 7 When the operation completes, click Exit to close *rmsoft*.

Additional Software For this Release

The following table lists the version numbers for supporting software for this release.

Software	Version
Autodesk® Backburner™	2008.1.2
Autodesk® Lustre® Color Management	2010
Autodesk® WiretapCentral™	2010
Autodesk® Cleaner® XL	1.5.2

Important Notes for 2010 SP 1

3

Topics in this chapter:

- [Erratum to the Configuration File Reference Guide: Incorrect Mentions of IBM Platforms](#) on page 9
- [Cleaning up Missing Frames Before Upgrading to the 2010 Release](#) on page 10
- [The 2010 Release Cannot Coexist with Older Releases on the Same Workstation](#) on page 10
- [Irrelevant Error Message When Starting the Burn License Server](#) on page 10
- [Support for New Timings](#) on page 10
- [FBX 2009.3 Support](#) on page 11
- [New Application Linux Privileges](#) on page 11
- [Setting a Custom UID and GID for the Application Linux Account](#) on page 12
- [Smoke/Flame: Preparing Timelines for Autodesk Lustre](#) on page 13
- [Troubleshooting Missing Frames](#) on page 13
- [Sending MTBF Reports to Autodesk](#) on page 14

Erratum to the Configuration File Reference Guide: Incorrect Mentions of IBM Platforms

The *Autodesk Visual Effects and Finishing 2010 Configuration File Reference Guide* available on the product DVD incorrectly contains mentions of end-of-life IBM® platforms and the DVS Centaurus® board.

Note that IBM platforms and the DVS Centaurus board are NOT supported as of this release of Autodesk Smoke and Autodesk Backdraft Conform. Do not attempt to install these applications or the current version of the DKU on such end-of-life workstations, as they will not work, and might also render your operating system unusable.

A corrected version of the *Autodesk Visual Effects and Finishing 2010 Configuration File Reference Guide* is available in this service pack and on the Autodesk Visual Effects and Finishing online documentation library at www.autodesk.com/me-documentation.

Cleaning up Missing Frames Before Upgrading to the 2010 Release

If you are upgrading to the 2010 release on a workstation where a previous release was installed, it is recommended to make sure there are no missing frames in your previous release clip libraries before performing the upgrade.

See [Troubleshooting Missing Frames](#) on page 13 for instructions on how to detect and troubleshoot missing frames.

The 2010 Release Cannot Coexist with Older Releases on the Same Workstation

The DKU required by the 2010 release installs new drivers that are not compatible with older releases.

If you plan to use 2009 Extension 1 applications on the same workstation as the 2010 release, upgrade your 2009 Extension 1 applications to Service Pack 4 after installing the 2010 release.

Older releases, such as 2009 and 2008 cannot be used on the same workstation as the 2010 release.

NOTE Projects and clip libraries created in these older releases can still be transferred and used in the 2010 release. See the compatibility topic in your application Help for details.

See the *Autodesk Inferno*, *Autodesk Flame*, and *Autodesk Flint 2009 Extension 1 SP 4 Release Notes*, or the *Autodesk Smoke and Autodesk Backdraft Conform 2009 Extension 1 SP4 Release Notes* for information on upgrading your 2009 Extension 1 applications to Service Pack 4.

NOTE You do not need to install DKU 3.5.2 that comes with version 2009 Extension 1 SP4 if you have already upgraded your workstation to DKU 4.0.0.

Irrelevant Error Message When Starting the Burn License Server

When running the Burn License Server for the first time, the following error message is displayed in the terminal:

```
license manager: can't initialize: Cannot find license file.  
The license files (or license server system network addresses) attempted are listed below.  
Use LM_LICENSE_FILE to use a different license file, or contact your software provider for  
a license file.  
Filename: /usr/local/flexlm/licenses/license.dat  
License path: /usr/local/flexlm/licenses/license.dat
```

The license file name specified in this error message is incorrect. The correct license file path for the License Server is */usr/discreet/licserv/DL_license.dat*. If you receive this error message after having entered the license in the correct file, ignore the message.

Support for New Timings

It is now possible to input or output material with the following HDCAM SR timings:

- 1080@60p

- 1080@59,94p
- 1080@50p

The new timings do have the following requirements and limitations:

- They are only available on HP 8600 workstations.
- Input and output is done through the AJA video card. The NVidia 5600 SDI card does not support the new timings.
- Audio monitoring is not available during input, nor when at idle, but is available during output.
- The break-out-box must be connected to the VTR with a dual-link connection, as if transferring 4:4:4 material.
- For performance reasons, proxies cannot be generated simultaneously, and will be generated after input.

NOTE When inputting or outputting the new timings, the VTR and the Engineering menu (from the Input Clip and Output Clip menus) show that they are in 4:2:2 mode. This is expected as the material that is captured or output is 4:2:2, even if a dual-link connection is required. The dual-link is used because a single-link does not have the bandwidth necessary to accommodate the new timings.

FBX 2009.3 Support

This release now supports FBX® version 2009.3.

New Application Linux Privileges

WARNING Skipping the procedures in this section may result in permission issues later (incorrect access privileges, inaccessible projects, restricted write permissions). To minimize disruption, please read thoroughly.

Visual Effects and Finishing applications now run with the credentials of the user account currently logged in. They no longer run as root, except for some very specific operations or areas, including the project database, integrity checks, volume locks (.ref), and text dictionaries.

This change affects project settings and user profiles, it does not impact media, except for soft-imported media which was previously accessed as root.

Soft-imported media is now accessed using the credentials of the currently logged in user, which might cause access problems. You can solve this issue by using the **chmod 666** command to set read and write permissions for everyone on the media files you plan to soft-import, or by starting the application from a user account with read and write access to the soft-imported media files.

Perform one of the following operations to update project permissions before starting the application for the first time.

- Open a terminal as root, and run the `/usr/discreet/<application_directory>/bin/copyProjects` script. The script creates a copy of all existing projects, sets project ownership to root, and permissions to 666 (read and write access for everyone). See the Compatibility topic of the application Help for details.
- Open a terminal as root, and run the `/usr/discreet/<application_directory>/bin/changePermissions` script. This script does not change project ownership, but it changes project permissions to 666. See [Running the changePermissions Script](#) on page 12.
- Create new projects, and discard the old ones.

The logged in user is set as the owner of the new projects, and project permissions are set to 666. This is the built-in solution, used from now on whenever new projects are created.

The application installation script still creates an application user, just as before. You can run the application from the application user account, or from your personal Linux user account. The logged in user (be it the application user, or your personal user account) is set as the owner of any new projects, and project permissions are set to 666.

Using the application from a personal Linux user account, has the following limitations:

- There are no shortcuts to launch the application on the Desktop. You must create a shortcut yourself, or launch the application from a terminal, using the `/usr/discreet/<application_directory>/bin/startApplication` script. For example `/usr/discreet/flame_2010/bin/startApplication`
- There can be incompatibilities (such as hotkeys misbehaving) between the desktop environment and the Visual Effects and Finishing application, due to your custom window manager preferences.

Running the changePermissions Script

The `changePermissions` script changes the permissions of every project and user profile to 666 (read and write access for everyone).

To run the changePermissions script:

1 Open a terminal and log in as root.

2 Type the following command:

```
/usr/discreet/<application_directory>/bin/changePermissions -p  
<project_list> -u <user_list>
```

Where `<project_list>` is the list of projects you want to change permissions for, separated by space, and `<user_list>` is the list of user accounts you want to change permissions for, separated by space

If you do not specify a list of projects or users, the script lists the first project it finds, and asks if you want to change permissions for it. Type one of the following answers:

- **y** to change permissions on the current project, and move to the next project found.
- **n** to keep current project permissions, and move to the next project found
- **all** to change permissions on all projects found, and move to the next category (Editing user accounts)
- **go** to keep the current permissions of all projects, and skip to the next category (Editing user accounts)
- **quit** to exit the script without making any permission changes.

After you confirm or deny the changes for all three categories (projects, Editing user accounts, and Effects user accounts), the script changes permissions and exits.

Setting a Custom UID and GID for the Application Linux Account

The application installer now allows you to set a custom UID and GID for the application Linux account created by the installer.

NOTE By default the application Linux account is created under the “users” group.

To install an application and create an application Linux account using a custom GID and UID, run the application installation script with the `--uid` and `--gid` parameters. For example:

```
./INSTALL_SMOKE --uid=1234 --gid=12
```

Smoke/Flame: Preparing Timelines for Autodesk Lustre

Smoke and Flame optimize timewarps to speed up processing. As a result of the optimization, timewarps appear as multiple shots when the Smoke or Flame timelines are brought into Autodesk Lustre. Multiple shots can be more difficult to grade in Lustre.

To prevent the optimization you can either:

- Use Autodesk Burn™ to process your timeline, or
- Turn off timewarp optimization for processing

To turn off timewarp optimization for processing, enable the following environment variable before you start Smoke or Flame. Open a terminal and type:

```
setenv DL_DISABLE_NOOP_SOFT_FX_OPTIMISATION 1
```

After you enable this environment variable, you must process all timelines you want to share with Lustre to remove the optimization.

When timewarp optimization is off, processing time slows down and more space is consumed on your framestore.

NOTE The environment variable is set for the current session only. To set it permanently, open the `~/.cshrc` file in a text editor and add the following on a new line: `setenv DL_DISABLE_NOOP_SOFT_FX_OPTIMISATION 1`

Troubleshooting Missing Frames

If the application cannot find some of the frames referenced by your clips, the following error message is displayed when the application starts:

- In the terminal:
WARNING: <nnnn> <volume_type> frames are missing on this volume; see Release Notes for corrective measures.
Where <nnnn> represents the number of missing frames, and <volume_type> can be *stonefs* or *standardfs*.
- In the application start-up screen:
VOLUMEMGT: WARNING: Some frames not found; see Release Notes for corrective measures.

The error message appears in one or both of the following situations:

- Some clips in your libraries or desktops reference frames on a remote volume.
- Some clips in your libraries or desktops reference local frames that no longer exist.

To identify the type of issue:

- Open a terminal and type:

```
vic -v <volume_name> -s remote -s lost
```

where `<volume_name>` is the name of the affected volume, for example `stonefs` or `stonefs7`.

NOTE The `-s` parameter of `vic` is only available as of the 2008 SP6 release.

The output of this command should be similar to the following:

```
Checking libraries for remote and lost frames...
/usr/discreet/clip/stonefs/My_Project1/editing.000.desk has none
/usr/discreet/clip/stonefs/My_Project1/Default.000.clib references 30
missing frames.
/usr/discreet/clip/stonefs/My_Project2/editing.000.desk has none
/usr/discreet/clip/stonefs/My_Project2/from_caplan.000.clib references
70 remote frames
```

Depending on the result of the previous command, do one of the following:

- For clips with frames listed as remote, see [To recover remote frames](#) on page 14.
- For clips with frames listed as missing, see [To remove unrecoverable frames](#) on page 14.

To recover remote frames:

- 1 Archive all clip libraries that are reported as containing remote frames. In the previous example, the fourth library (*from_caplan*) contains remote frames.
- 2 Rename the libraries you just archived, such as by adding the remote suffix to the library name.
- 3 Restore the clip libraries from the archive. All the frames referenced by the clips should now be stored locally.
- 4 Delete the original libraries.

To remove unrecoverable frames:

- 1 In the terminal, type:

```
vic -v <volume_name> -r
```

Each unrecoverable frame in the clip is replaced with a generic black frame containing the text “LOST”.
- 2 Open the Visual Effects and Finishing application.
The names of clips that contained unrecoverable frames are displayed in red in the Clip Library.
- 3 Load each affected clip on the Desktop.
- 4 Scrub through the clip, identify the black frames containing the text “LOST”, and delete them from the clip.

Sending MTBF Reports to Autodesk

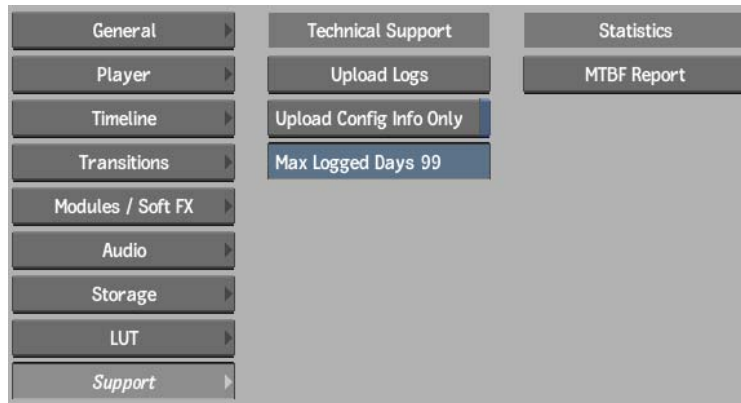
Autodesk may ask users to submit MTBF (Mean Time Between Failures) reports from time to time.

MTBF reports allow Autodesk to evaluate system stability using uptime and crash information about your product. Note that no confidential project information is collected through this report.

You can generate MTBF reports from the UI of the Visual Effects and Finishing applications.

To generate an MTBF report from an application:

- 1 Enter the Preferences menu of your application.
- 2 Select the Support Menu.



- 3 Click the MTBF Report button.

An MTBF report is generated from the application logs, and is automatically uploaded to the Autodesk FTP if the workstation is connected to the Internet.

NOTE If the workstation is not connected to the Internet, the following error message is displayed: “Cannot access the FTP server. Please upload the file `/tmp/<report_file_name>` manually.”, where `<report_file_name>` represents the name of the XML report file. Contact Autodesk Customer Support for information on manually sending the report file to Autodesk.

Application Feature Changes

4

Topics in this chapter:

- [Introduction](#) on page 17
- [Image Data Type Hot Keys](#) on page 17
- [New Sapphire Sparks from GenArts](#) on page 18
- [Colour Decision List Spark](#) on page 18
- [Smoke/Flame: Preparing Timelines for Autodesk Lustre](#) on page 18
- [Batch](#) on page 19

Introduction

This chapter describes changes to the application that were not documented in the user guide or new features guide.

Image Data Type Hot Keys

The Bypass button, located in the Image Data Type panel of the Player and View menu, has a hot key assigned to it. Use **Ctrl+Shift+B** to toggle the Bypass button.

The Bypass button in the Image Data Type panel of the Preferences now has an empty hot key entry that can be customized by the user.

NOTE The **Ctrl+Shift+B** hot key was applied to the Ripple command in the Batch timeline, and this entry is now empty.

New Sapphire Sparks from GenArts

If you are using Sapphire® Sparks from GenArts®, please upgrade to the latest version (at least 4.061). See your GenArts representative for information.

Colour Decision List Spark

Using a new Spark®, you can load and apply files that use the American Society of Cinematographers Color Decision List (ASC CDL) format.

Using SparkCDL, you can load an XML-based file that includes basic colour grading metadata and apply it to a clip.

The following is an example of a colour decision list that uses an XML schema:

```
<ColorDecisionList xmlns="urn:ASC:CDL:v1.01">
  <ColorDecision>
    <ColorCorrection>
      <SOPNode>
        <Description>dark blue</Description>
        <Slope>1.0000 1.0000 1.4000</Slope>
        <Offset>0.000 0.0000 0.0000</Offset>
        <Power>1.3 1.3 1.3</Power>
      </SOPNode>
      <SatNode>
        <Saturation>1.000000</Saturation>
      </SatNode>
    </ColorCorrection>
  </ColorDecision>
</ColorDecisionList>
```

For each colour channel, the Sparks menu displays the slope (gain), offset, or power (gamma) values. You can manually adjust or reset these values.



See Using Sparks® as a Plug-in in the Sparks chapter of your application help or user guide.

Smoke/Flame: Preparing Timelines for Autodesk Lustre

Smoke and Flame optimize timewarps to speed up processing. As a result of the optimization, timewarps appear as multiple shots when the Smoke or Flame timelines are brought into Autodesk Lustre. Multiple shots can be more difficult to grade in Lustre.

To prevent the optimization you can either:

- Use Autodesk Burn™ to process your timeline, or

- Turn off timewarp optimization for processing

To turn off timewarp optimization for processing, enable the following environment variable before you start Smoke or Flame. Open a terminal and type:

```
setenv DL_DISABLE_NOOP_SOFT_FX_OPTIMISATION 1
```

After you enable this environment variable, you must process all timelines you want to share with Lustre to remove the optimization.

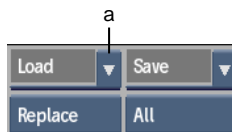
When timewarp optimization is off, processing time slows down and more space is consumed on your framestore.

NOTE The environment variable is set for the current session only. To set it permanently, open the `~/.cshrc` file in a text editor and add the following on a new line: `setenv DL_DISABLE_NOOP_SOFT_FX_OPTIMISATION 1`

Batch

From the main Batch level, you can either load an existing Batch setup or create a new setup.

Select Load Batch or New Batch from the Load dropdown list. If you select to create a new Batch setup, you must confirm that you want to delete the current setup.



(a) Load dropdown list

When saving clips, you can choose to save only selected clips to the Snapshot library. Select the clips in the schematic, and then click Send Clips To Library in the Batch Setup menu.

