

Autodesk®
Lustre® 2010
A Discreet® systems product

Release Notes



Autodesk® Lustre® 2010 Software

© 2009 Autodesk, Inc. All rights reserved. Except as otherwise permitted by Autodesk, Inc., this publication, or parts thereof, may not be reproduced in any form, by any method, for any purpose.

Certain materials included in this publication are reprinted with the permission of the copyright holder.

Trademarks

The following are registered trademarks or trademarks of Autodesk, Inc., and/or its subsidiaries and/or affiliates in the USA and other countries: 3DEC (design/logo), 3December, 3December.com, 3ds Max, Algor, Alias, Alias (swirl design/logo), AliasStudio, AliasWavefront (design/logo), ATC, AUGI, AutoCAD, AutoCAD Learning Assistance, AutoCAD LT, AutoCAD Simulator, AutoCAD SQL Extension, AutoCAD SQL Interface, Autodesk, Autodesk Envision, Autodesk Intent, Autodesk Inventor, Autodesk Map, Autodesk MapGuide, Autodesk Streamline, AutoLISP, AutoSnap, AutoSketch, AutoTrack, Backburner, Backdraft, Built with ObjectARX (logo), Burn, Buzzsaw, CAiCE, Civil 3D, Cleaner, Cleaner Central, ClearScale, Colour Warper, Combustion, Communication Specification, Constructware, Content Explorer, Dancing Baby (image), DesignCenter, Design Doctor, Designer's Toolkit, DesignKids, DesignProf, DesignServer, DesignStudio, Design Web Format, Discreet, DWF, DWG, DWG (logo), DWG Extreme, DWG TrueConvert, DWG TrueView, DXF, Ecotect, Exposure, Extending the Design Team, Face Robot, FBX, Fempro, Fire, Flame, Flint, FMDesktop, Freewheel, GDX Driver, Green Building Studio, Heads-up Design, Heidi, HumanIK, IDEA Server, i-drop, ImageModeler, iMOUT, Incinerator, Inferno, Inventor, Inventor LT, Kaydara, Kaydara (design/logo), Kynapse, Kynogon, LandXplorer, Lustre, MatchMover, Maya, Mechanical Desktop, Moldflow, Moonbox, MotionBuilder, Movimento, MPA, MPA (design/logo), Moldflow Plastics Advisers, MPI, Moldflow Plastics Insight, MPX, MPX (design/logo), Moldflow Plastics Xpert, Mudbox, Multi-Master Editing, Navisworks, ObjectARX, ObjectDBX, Open Reality, Opticore, Opticore Opus, Pipeplus, PolarSnap, PortfolioWall, Powered with Autodesk Technology, Productstream, ProjectPoint, ProMaterials, RasterDWG, RealDWG, Real-time Roto, Recognize, Render Queue, Retimer, Reveal, Revit, Showcase, ShowMotion, SketchBook, Smoke, Softimage, Softimage|XSI (design/logo), Sparks, SteeringWheels, Stitcher, Stone, StudioTools, Topobase, Toxik, TrustedDWG, ViewCube, Visual, Visual LISP, Volo, Vtour, Wire, Wiretap, WiretapCentral, XSI, and XSI (design/logo).

All other brand names, product names or trademarks belong to their respective holders.

Disclaimer

THIS PUBLICATION AND THE INFORMATION CONTAINED HEREIN IS MADE AVAILABLE BY AUTODESK, INC. "AS IS." AUTODESK, INC. DISCLAIMS ALL WARRANTIES, EITHER EXPRESS OR IMPLIED, INCLUDING BUT NOT LIMITED TO ANY IMPLIED WARRANTIES OF MERCHANTABILITY OR FITNESS FOR A PARTICULAR PURPOSE REGARDING THESE MATERIALS.

Published by: Autodesk, Inc.
111 McInnis Parkway
San Rafael, CA 94903, USA

Title: Autodesk Lustre 2010 Release Notes

Document Version: 2

Date: October 26, 2009

Contents

Chapter 1	Introduction	1
	About these Release Notes	1
	Related Documentation	1
	Contacting Autodesk	2
Chapter 2	Application Requirements and Installation	3
	Quick Upgrade Workflow	3
	System Requirements	6
	Lustre Master, Lustre HD, Lustre Station - Windows	7
	Lustre Master, Lustre HD, Lustre Station - Linux Stand-alone	7
	Lustre Master Station and Lustre Station - Linux (with Incinerator)	7
	Certified BIOS Versions	7
	Verifying and Upgrading the DKU	8
	Verifying and Upgrading the AJA OEM 2K Firmware	8
	Updating the NVIDIA Graphics Card Driver	9
	Licensing	10
	Compatibility	10
	Grades Created in Lustre 2010 not Compatible with Older Versions	10
	Incinerator Limitations	10
	Uninstalling Lustre	10
	Additional Software for this Release	11
Chapter 3	Important Notes for Lustre 2010	13
	DKU Version 4.5.0 Required	13
	Imhostid not Supported in Lustre 2010 on Linux Workstations	13
	Creating New Projects and Users after Upgrading	14
	Recording to a VTR in Record Mode	14
	Stereoscopy Limitation	14
	Wiretap Gateway and RED Camera Firmware Compatibility	14
	Determining the Camera Firmware Version of a R3D File	14

Introduction

1

Topics in this chapter:

- [About these Release Notes](#) on page 1
- [Related Documentation](#) on page 1
- [Contacting Autodesk](#) on page 2

About these Release Notes

This document provides system requirements, upgrade instructions, and last-minute important information for the current version of Autodesk® Lustre®.

Before upgrading your application, read this document thoroughly, as it contains important notes about the current version, including supported hardware platforms and operating systems, required NVIDIA® graphics card driver (for Windows® workstations), required *Discreet Kernel Utilities* (DKU) version and AJA OEM 2K firmware version (for Linux® workstations).

- For important notes about this version, see [Important Notes for Lustre 2010](#) on page 13.
- For the DKU version and AJA OEM 2K firmware version required for this version see [Verifying and Upgrading the DKU](#) on page 8 and [Verifying and Upgrading the AJA OEM 2K Firmware](#) on page 8.
- For a quick overview of the steps required to upgrade your application to the current version, see [Quick Upgrade Workflow](#) on page 3.

Related Documentation

This release has documentation that helps you install, configure, and use your product. It is available from your product as a Web-based help system and online as PDF files.

- To view the Help from anywhere in the application, press **Shift+F1**.

Access the latest documentation at www.autodesk.com/lustre-documentation

Contacting Autodesk

For Autodesk Media and Entertainment Customer Support, visit <http://www.autodesk.com/support>.

Customer support is also available through your Autodesk reseller. To find a reseller near you, consult the reseller look-up database at <http://www.autodesk.com/resellers>.

Application Requirements and Installation

2

Topics in this chapter:

- [Quick Upgrade Workflow](#) on page 3
- [System Requirements](#) on page 6
- [Verifying and Upgrading the DKU](#) on page 8
- [Verifying and Upgrading the AJA OEM 2K Firmware](#) on page 8
- [Updating the NVIDIA Graphics Card Driver](#) on page 9
- [Licensing](#) on page 10
- [Compatibility](#) on page 10
- [Uninstalling Lustre](#) on page 10
- [Additional Software for this Release](#) on page 11

Quick Upgrade Workflow

This section provides a high level overview of the application upgrade workflow, as well as systems requirements for the current version of Autodesk Lustre.

For more details, or if this is the first time you are installing Autodesk Lustre, we recommend reading the latest versions of the *Autodesk Lustre Installation and Configuration Guide for Linux Workstations*, *Autodesk Lustre Installation and Configuration Guide for Windows Workstations* or *Autodesk Incinerator Installation and User Guide* for detailed information on each step in the installation procedure.

To upgrade Lustre stand-alone to the current version on Linux workstations:

- 1 Before beginning the upgrade procedure, read the information in [Important Notes for Lustre 2010](#) on page 13, as well as the information in [Compatibility](#) on page 10.

- 2 Make sure your workstation and operating system meet the minimum requirements for the current version of Lustre. See [System Requirements](#) on page 6.
- 3 Open a terminal and log in as root.
- 4 If you are installing from the Lustre DVD, insert and mount the DVD.
- 5 If you are not installing from a DVD, download the DKU and application *tar* files from the links provided in the release announcement. Then unpack each *tar* file by typing:


```
tar -zxvf <tar_file>
```

 Each *tar* file is unpacked into a new directory.
- 6 Install the required version of the DKU. See [Verifying and Upgrading the DKU](#) on page 8.
- 7 If your HP workstation is equipped with an AJA OEM 2K card, verify and upgrade the AJA firmware if necessary. See [Verifying and Upgrading the AJA OEM 2K Firmware](#) on page 8.
- 8 Go to the application installation directory, and start the installation script by typing:


```
./INSTALL_LUSTRE
```

 The script starts and guides you through the installation process. See the application installation and configuration guide for detailed information on each step.
- 9 Upgrade any additional packages, such as *BrowseD*, *Slave Renderer*, or *Burn™* for Lustre on dedicated machines. See the latest application installation and configuration guide for details.
- 10 License your Lustre software. See the *Autodesk Lustre Installation and Configuration Guide for Linux Workstations*.
- 11 Start the application and create a new user and a new project. This is necessary in order to get the new hotkeys and Autodesk Control Surface shortcuts that were introduced in this version. See the Lustre help for details.

To upgrade Lustre to the current version on Windows workstations:

- 1 Before beginning the upgrade procedure, read the information in [Important Notes for Lustre 2010](#) on page 13.
- 2 Make sure your workstation and operating system meet the minimum requirements for the current version of Lustre. See [System Requirements](#) on page 6.
- 3 If you are installing from the Lustre DVD, insert the DVD.
- 4 If you are not installing from a DVD, download the application *zip* files from the link provided in the release announcement. Then extract the contents of the *.zip* file into a new folder using an application such as *Winzip*.
- 5 Open the Lustre installation folder (on the DVD, this is the *Windows* folder), and double-click the *Lustre<version>Setup.exe* file to start the Lustre installation wizard.
- 6 Follow the on-screen instructions.
- 7 When prompted to select a Lustre component refer to the following table.

Select:	To install:
Lustre	The software required for the Lustre Master Station, Lustre HD Station, or Lustre Station. The type of station is determined by the license.
Render (Slave Render)	The software necessary to perform rendering on the Slave Renderer.

Select:	To install:
	WARNING Do not install the Slave Renderer on the Master Station, HD Station, or Lustre Station.
Plugins	Lustre plug-ins
Online Help	The browser-based online help files only. You can also use this option to install the online help independently of the software. This option is enabled by default when installing the Master or Lustre Station options.
BrowseD Server	The Lustre network file server that provides fast file transfers between workstations and centralized storage. For more information on BrowseD, see the latest <i>Lustre Software Installation Guide for Windows Workstations</i> .

- 8 Click Install.
The selected software is installed.
- 9 License your Lustre software. See the *Autodesk Lustre Installation and Configuration Guide for Windows Workstations*.
- 10 Restart the workstation.
- 11 Start the application and create a new user and a new project. This is necessary in order to get the new hotkeys and Autodesk Control Surface shortcuts that were introduced in this version. See the Lustre help for details.

To upgrade Incinerator to the current version:

- 1 Before beginning the upgrade procedure, read the information in [Important Notes for Lustre 2010](#) on page 13, as well as the information in [Compatibility](#) on page 10.
- 2 Make sure the hardware and operating systems of the Lustre workstation, Lustre Media Server and Incinerator nodes meet the minimum requirements for the current version of Lustre. See [System Requirements](#) on page 6.
- 3 Open a terminal on the Lustre Media Server and log in as root.
- 4 If you are installing from the Lustre DVD, insert and mount the DVD.
- 5 If you are not installing from a DVD, download the DKU and application *tar* files from the links provided in the release announcement. Then unpack each *tar* file by typing:

```
tar -zxvf <tar_file>
```

 Each *tar* file is unpacked into a new directory.
- 6 Install the required version of the DKU. See [Verifying and Upgrading the DKU](#) on page 8.
- 7 If you are installing from an optical disc, insert the disc in the disc drive, mount it, create a temporary directory for the Lustre installation package, and copy the contents of the *Linux/Applications* subdirectory from the DVD into the temporary directory.

```
mount /mnt/cdrom
mkdir -p /usr/discreet/DKU/INC/Lustre_<version>
cp -r /mnt/cdrom/Linux/Applications/*
/usr/discreet/DKU/INC/Lustre<version>/
```
- 8 If you are installing from a downloaded *tar* file, browse to the */usr/discreet/DKU/INC/* directory and unpack the *tar* file into it, by typing:

```
cd /usr/discreet/DKU/INC/  
tar zxvf <file_name>.tar.gz
```

The installation files are unpacked into a new directory under */usr/discreet/DKU/INC/*.

- 9 Browse to the installation directory and start the installation script for the Lustre Media Server. Type:
./INSTALL_LUSTRE_SERVER
The software package is installed on the Lustre Media Server. The installation script installs and configures ReleaseNotes daemons and utilities.
- 10 Open a secure shell to log into each node. Type:
ssh <NODE_IP>
- 11 Navigate to the directory containing the installation script on the Lustre Media Server by typing:
cd /hosts/<lms_hostname>/usr/discreet/DKU/INC/Lustre_<version>
- 12 Start the installation. Type:
./INSTALL_LUSTRE_RENDERNODE
The ReleaseNotes node package is installed.
- 13 Reboot the node.
- 14 Repeat steps 12 to 14 for each Incinerator node.
- 15 Open a secure shell to log into the workstation. Type:
ssh <WS_IP>
- 16 Navigate to the directory containing the installation script by typing:
cd /hosts/<lms_hostname>/usr/discreet/DKU/INC/Lustre_<version>
- 17 Start the installation. Type:
./INSTALL_LUSTRE_INCINERATOR

NOTE During installation, if you are prompted to confirm whether you want to start Backburner™ Manager automatically, answer No.

The ReleaseNotes package is installed on the workstation.

- 18 If your HP workstation is equipped with an AJA OEM 2K board, verify and upgrade the AJA firmware if necessary. See [Verifying and Upgrading the AJA OEM 2K Firmware](#) on page 8.
- 19 Upgrade any additional packages, such as *BrowseD*, *Slave Renderer*, or *Burn*™ for Lustre on dedicated machines. See the latest application installation and configuration guide for details.
- 20 Reboot the Lustre Media Server, and the Workstation.
- 21 License your Incinerator components. See the *Incinerator Installation and User Guide*.
- 22 Start Lustre and create a new user and a new project. This is necessary in order to get the new hotkeys and Autodesk Control Surface shortcuts that were introduced in this version. See the Lustre help for details.

System Requirements

This release of Lustre is available for the Windows XP SP2 platform (only on HP xw8600 and HP xw8400 workstations), Red Hat Enterprise Linux Desktop 5.3 with Workstation Option (only on HP Z800 workstations), and Red Hat Enterprise Linux Workstation 4 Update 3 (on HP xw8600 and HP xw8400 workstations).

The following tables list the hardware supported in this release, as well as the supported NVIDIA graphics card drivers for each system.

See the latest Hardware Setup Guide for your workstation for wiring diagrams, BIOS settings, and BIOS update instructions.

Lustre Master, Lustre HD, Lustre Station - Windows

Computer	Graphics Card	Graphics Driver	VIO
HP xw8600	NVIDIA Quadro FX5600 + SDI	186.18	AJA
HP xw8400	NVIDIA Quadro FX5500 + SDI	186.18	DVS

Lustre Master, Lustre HD, Lustre Station - Linux Stand-alone

Computer	Graphics Card	Graphics Driver	VIO
HP Z800	NVIDIA Quadro FX5800 + SDI	185.18.14	AJA
HP xw8600	NVIDIA Quadro FX5600 + SDI	185.18.14	AJA
HP xw8400	NVIDIA Quadro FX5500 + SDI	185.18.14	DVS

Lustre Master Station and Lustre Station - Linux (with Incinerator)

Computer	Graphics Card	Lustre Media Server	Incinerator Nodes	VIO	Storage
HP Z800	NVIDIA Quadro FX5800 + SDI	HP Z800	HP ProLiant DL160-G6	AJA	Autodesk Stone Direct XR-series
HP xw8600	NVIDIA Quadro FX5600 + SDI	HP xw8600	HP ProLiant DL160-G5	AJA	Autodesk Stone Direct XR-series
HP xw8400	NVIDIA Quadro FX5500 + SDI	HP xw9400	HP ProLiant DL140-G3	DVS	Autodesk Stone Direct XR-series

Certified BIOS Versions

The following tables list the latest certified BIOS versions for workstations and render nodes. For BIOS update instructions see the latest Hardware Setup Guide for your workstation model.

Workstation	Certified BIOS version
HP Z800	1.06
HP xw8600	1.32

Workstation	Certified BIOS version
HP xw8400	2.26
Render Node	Certified BIOS version
HP ProLiant DL160se G6	07/05/2009
HP ProLiant DL160 G5	04/09/2008

Verifying and Upgrading the DKU

NOTE This section only applies to Linux systems.

Before installing your application, upgrade the DKU to the required version.

The required DKU version for this application version is **4.5.0**.

To upgrade the DKU:

- 1 Check the currently installed DKU version. As root, open a terminal and type:

```
head -n1 /etc/DKUversion
```

If the DKU version output by the command does not match the version required for the current release, perform the remaining steps in this procedure.
- 2 Download the latest DKU *tar* file from the download link provided in the release announcement.
- 3 Go to the directory where the *tar* file was downloaded, and unpack it by typing:

```
tar -zxvf DKU_<version_number>.tar.gz
```

The DKU *tar* file is unpacked into a new directory.
- 4 Go to the newly-created DKU installation directory, and launch the DKU installation script:

```
./INSTALL_DKU
```
- 5 When the DKU installation completes, reboot the system. Type:

```
reboot
```

Verifying and Upgrading the AJA OEM 2K Firmware

NOTE This section only applies to Linux systems.

If your workstation is equipped with an AJA OEM 2K card, the firmware of the card must be upgraded to use it with the current version of Lustre.

Consult the following table to identify the required AJA firmware version for your application version.

Workstation	AJA OEM 2K Firmware
HP Z800	0x75
HP xw8600	0x73

To verify and upgrade the AJA OEM-2K firmware:

- 1 Open a terminal and type:

```
cat /proc/driver/aja
```

If the `PCI version` line in the output lists a different version than the required one, perform the following steps to upgrade the firmware.

NOTE Before upgrading the AJA firmware, make sure you have upgraded the DKU, and that you have restarted the system.

- 2 Go to the `/usr/discreet/DKU/current/Utils/AJA_firmwareUpdate` directory.
- 3 Run the `AJAfw_update` utility to scan the AJA current firmware and, if required, update to the latest firmware version. Type:

```
./AJAfw_update
```

If the utility detects that the firmware and drivers need to be updated, it prompts you to start the update.
- 4 Start the firmware update by typing **Y** and then pressing **Enter**.
While the AJA firmware and drivers are being updated, your workstation appears to be frozen and your mouse and keyboard do not work. This is normal and indicates that the firmware is being updated. Once the firmware update is complete, you are returned to the terminal.
- 5 Shut down your workstation by typing:

```
shutdown -g0
```

If your workstation does not prompt you to power down, press the power button for 10 seconds to force a power down.
- 6 Disconnect the power cord.
- 7 Wait 10 seconds, reconnect the power cord, then restart your workstation.

NOTE For more details about the AJA firmware procedures, consult the `README` file located in the current directory.

Updating the NVIDIA Graphics Card Driver

NOTE This procedure only applies to Windows systems. On Linux systems, the correct version of the NVIDIA Graphics Card driver is installed automatically by the DKU.

To upgrade your NVIDIA graphics card driver:

- 1 Download the driver upgrade package to a temporary folder on your system.
- 2 Use a compression utility, like *Winzip*® to extract the driver update package from the zip file.
- 3 Open the folder where the driver update package was extracted and double-click `setup.exe` to start the driver update.
The NVIDIA Install Shield Wizard opens.
- 4 Click **Next** to continue the upgrade procedure.
A Hardware Installation warning message appears.
- 5 Click **Continue Anyway**.
The driver installs.

- 6 Select Yes, I want to restart my computer now, and click Finish.
After you reboot, the NVIDIA graphics card driver is installed.

Licensing

As an eligible subscription customer, you will receive a new license for the new version of your product. For instructions on installing your license code see the *Autodesk Lustre Installation and Configuration Guide* for your operating system, or the *Autodesk Incinerator Installation and User Guide*.

NOTE You do not need a new license if you are upgrading to a service pack of the same release or to a service pack of the same extension.

Compatibility

This sections lists important compatibility issues you should be aware of when installing or using Autodesk Lustre software.

Grades Created in Lustre 2010 not Compatible with Older Versions

As a result of bug fixed and changes introduced in version 2010, grades created in Lustre 2010 cannot be loaded in older versions of Lustre (such as 2009 Extension 1).

Incinerator Limitations

The following features are not supported when the Incinerator Cluster is connected.

- Stereo
- Accessing media located on a Stone FS / Standard FS through Wiretap. Soft Imported / Published Media is supported.
- Real-time playback of media accessed through Wiretap Gateway.
- Using the high-quality Shrink with the Keyer (the feature is very slow if used with the Incinerator cluster). Contact Autodesk Media and Entertainment Customer Support for assistance.

Real-time playback is not reachable for the following features when the Incinerator Cluster is connected:

- Using external mattes with 2k material.
- Degrained media or cache.

Uninstalling Lustre

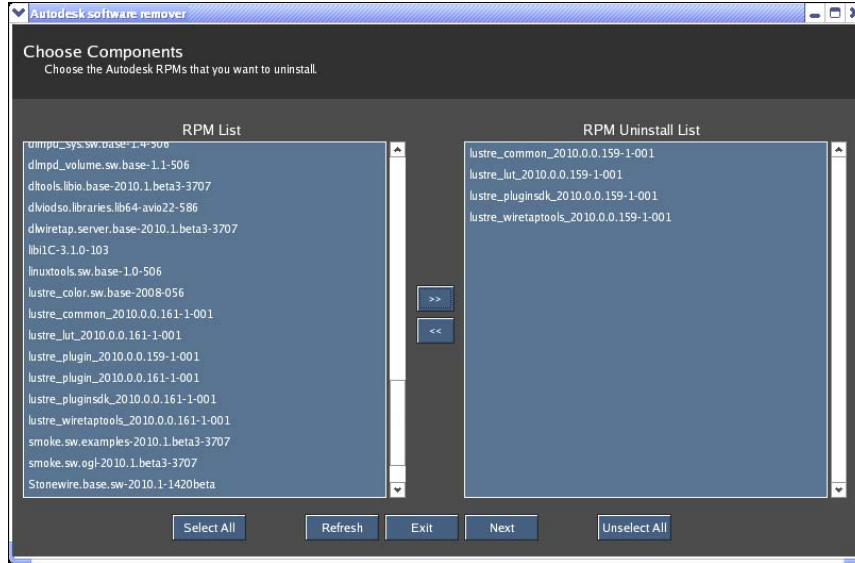
- To uninstall Lustre on Windows workstations, click Start > Control Panel > Add or Remove Programs, and follow the on-screen instructions.
- On Linux, the *rmsoft* utility enables you to easily uninstall Lustre software components from your Linux workstation. Read the following procedure for instructions on using *rmsoft*.

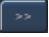
To uninstall your application using *rmsoft*:

- 1 If you are logged in as the application user in KDE, log out and log back into KDE as root.
- 2 As root, open a terminal, and type:

rmsoft

The *rmsoft* user interface appears.



- 3 Select the RPM packages you want to uninstall in the RPM list on the left (click Select All to select all the packages), then click  to move them to the RPM uninstall list on the right.
- 4 Click Next.
- 5 Click Uninstall & Remove to confirm the removal of the selected packages and directories. The uninstallation starts and *rmsoft* displays details on the process.
- 6 When the operation completes, click Exit to close *rmsoft*.
- 7 Optional: You can also delete the log files associated with a given application version in the `/var/log/` directory.

Additional Software for this Release

The following table lists the version numbers for supporting software for this release.

Software	Version
Autodesk® Wiretap Gateway™	2010.1
Autodesk® Wiretap®	2010.1 SP1
Autodesk® WiretapCentral™	2010.1
Autodesk® Backburner™ Media I/O Adapter	2010.1
Autodesk® Backburner™	2010.1

Important Notes for Lustre 2010

3

Topics in this chapter:

- [DKU Version 4.5.0 Required](#) on page 13
- [Imhostid not Supported in Lustre 2010 on Linux Workstations](#) on page 13
- [Creating New Projects and Users after Upgrading](#) on page 14
- [Recording to a VTR in Record Mode](#) on page 14
- [Stereoscopy Limitation](#) on page 14
- [Wiretap Gateway and RED Camera Firmware Compatibility](#) on page 14
- [Determining the Camera Firmware Version of a R3D File](#) on page 14

DKU Version 4.5.0 Required

Lustre 2010 for Linux workstations, and Incinerator 2010 require version 4.5.0 of the *Discreet Kernel Utilities* (DKU). Make sure you upgrade your systems to this version of the DKU before upgrading your Lustre or Incinerator software. See [Verifying and Upgrading the DKU](#) on page 8.

Imhostid not Supported in Lustre 2010 on Linux Workstations

Note that licenses based on the *Imhostid* (MAC address) licenses are longer issued for Linux workstations as of Lustre 2010.

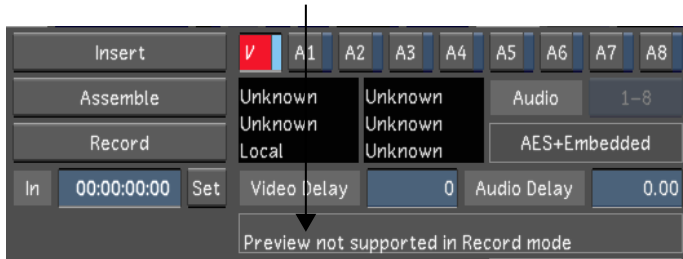
When requesting a license for your application, use the *dlhostid* utility to obtain the ID of your workstation. See the *Autodesk Lustre 2010 Installation and Configuration Guide for Linux Workstations* for details about licensing your software.

Creating New Projects and Users after Upgrading

As always with a new release, remember to create new projects and a new user before using Lustre, in order to have full access to the latest features (such as the Grade Bin cache), and to the latest hotkeys.

Recording to a VTR in Record Mode

When you are recording in Record mode and the Preview option is enabled, the Playout Error status displays a warning that the Preview option is not supported in Record mode.



If you receive this warning, disable the Preview option and try to record to VTR again.

Refer to “Recording in Record Mode” in the Video Capture and Video Playout chapter of the Lustre User Guide for information.

Stereoscopy Limitation

Note that the new Degrain tool is not supported in stereoscopic projects.

Wiretap Gateway and RED Camera Firmware Compatibility

Note that the current version of Wiretap Gateway is not fully compatible with REDCODE RAW media that was shot with camera firmware 20 or newer. If you attempt to ingest such media through Wiretap Gateway, the colors in the resulting clips will look different than the original footage.

An updated Wiretap Gateway package that resolves this issue will be available for download from Autodesk in an upcoming release.

Read the following section for instructions on how to determine the camera firmware version of a R3D file.

Determining the Camera Firmware Version of a R3D File

Perform the following tasks to determine which camera firmware version was used when shooting a R3D file.

- 1 Open a terminal, and log in as root.
- 2 Browse to the directory of the current Backburner Media I/O Adapter
`cd /usr/discreet/mio/current`
- 3 Type the following command to obtain information about your R3D file:
`./dl_get_media_info <path_to_R3D_file>`
For example:

```
./dl_get_media_info  
/SAN/My_Red_Movie/A001_C017_1230QP.RDC/A001_C017_1230QP_001.R3D
```

The version and build number of the camera firmware is displayed at the beginning of the output, in the <cameraFirmwareVersion> section. In the example below, the firmware version is 3.5.2, and the build number is 16.

```
<XML Version="1.0">  
  <clips version="1">  
    <clip index="0">  
      <cameraFirmwareVersion type="string">3.2.5#16</cameraFirmwareVersion>
```

