

Set a new standard.

Nine great reasons to switch from
AutoCAD® to Autodesk Map® 3D 2007.

Autodesk



Autodesk Map® 3D 2007 software has all the strengths of AutoCAD® software, yet is especially designed to create, manage, and share maps and data more efficiently. Do you need to use data from other departments or organizations in a variety of formats and coordinate systems? Is your productivity hampered because only one person at a time can work on a DWG file? Do you divide up your mapping project to avoid slow editing? Or do you manage a complicated set of infrastructure features but find that having your data spread across multiple DWG files is cumbersome? Read further to find out why you should make the move to Autodesk Map 3D.

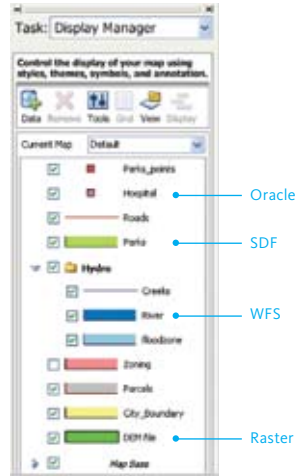
› **Nine Ways Autodesk Map® 3D 2007 raises the bar.**

1. Streamline input processes with improved data access and handling.
2. Accelerate projects with automated drawing clean-up.
3. Enhance output with defined standards across your organization.
4. Improve productivity with simultaneous multi-user access.
5. Speed performance on even the largest data sets.
6. Present data dynamically with powerful mapping and stylization tools.
7. Add new capabilities without managing complex relational databases.
8. Improve presentation impact with photo-realistic drawing capabilities.
9. Easily collaborate with a variety of publication and sharing options.

Streamlined data access.

Put an end to cumbersome data translation processes or expensive middleware. Autodesk Map 3D 2007 lets you natively access the most commonly used sources of spatial data—including ESRI® ArcSDE® and Oracle® databases. Directly access and edit ESRI SHP files, access raster imagery, and connect to web services such as Web Map Services (WMS) and Web Feature Service (WFS) to take advantage of publicly available data sources on the Internet. You can even use Microsoft® SQL Server and MySQL to store data with new spatial enabling functionality.

RESULT: You now have direct access to more data sources, and more industry standard formats, giving you the confidence that data integrity will remain intact throughout the process.



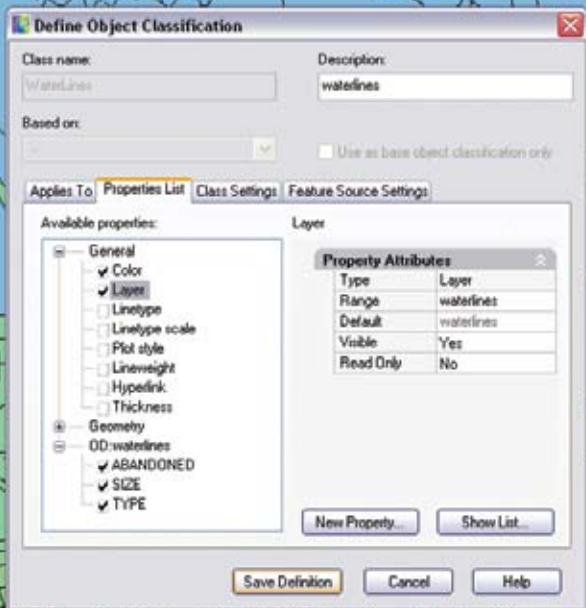
Cleaner, more accurate maps.

There's no need to waste time on inaccurate drawings or poorly digitized data. The power tools in Autodesk Map 3D 2007 automate the clean up of inaccuracies, minimizing duplication and incorrect information. Delete duplicates, including text objects. Correct undershoots or dangling objects. Eliminate errors with less time and effort.

RESULT: You get drawings and maps that are cleaner and more accurate right from the start, eliminating costly and time-consuming errors throughout the entire life of the project.

2





Output that meets exacting standards.

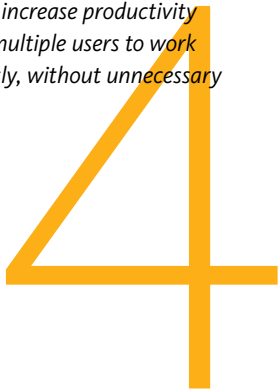
If you work with a variety of contractors or regulatory agencies, and need to prepare Sarbanes Oxley or GASB reports, you know the importance of specifying reporting and mapping standards for every project. When you create an object using Autodesk Map 3D 2007 object classification, the object automatically takes its properties and values from its object class, matching standards and maintaining consistency throughout your drawings. By simply applying a classification to a new or existing object, you can be assured that it meets your standards for both data and display.

RESULT: Your reports and maps will consistently meet the requirements of the even the most demanding end users.

Simultaneous access by multiple users.

The days of single-user access are over. With Autodesk Map 3D 2007 multi-user capabilities, all editing functions—including multi-user DWG file format editing—remain available to all users throughout the process. Changes and updates are registered immediately, providing every member of your team with accurate, up-to-date information.

RESULT: You increase productivity by allowing multiple users to work simultaneously, without unnecessary downtime.



5

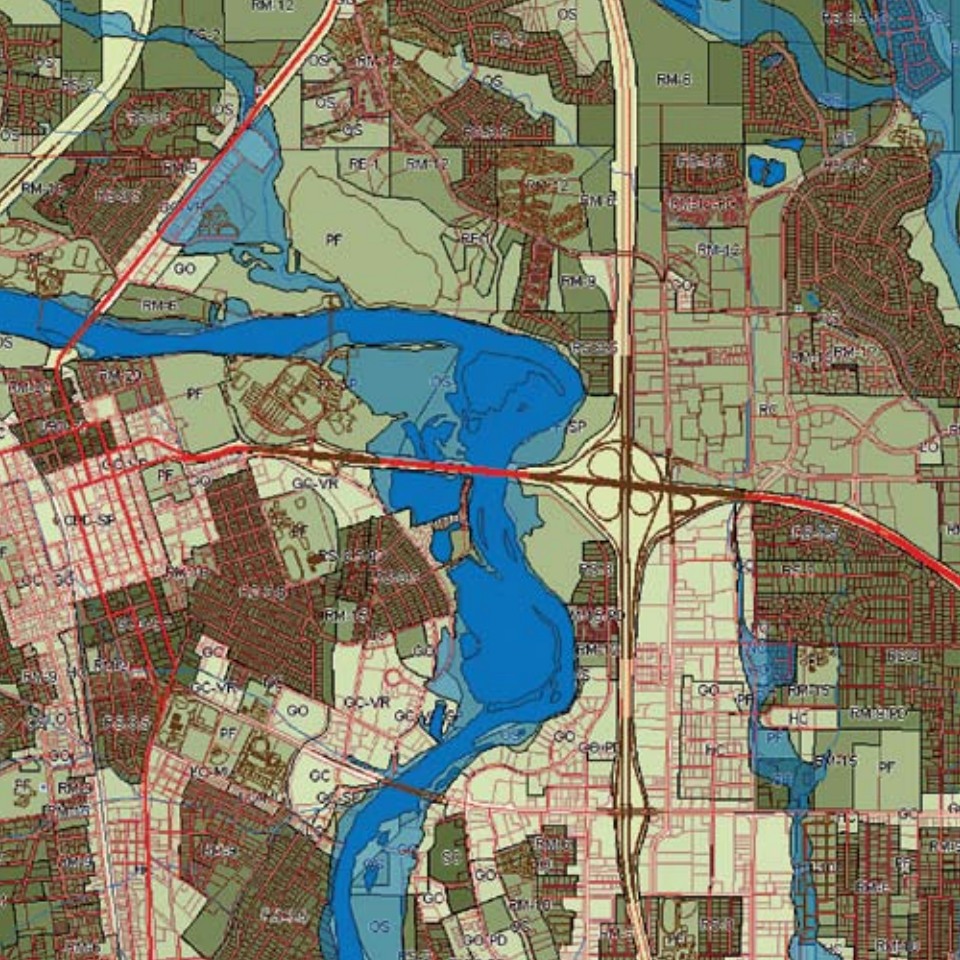
High performance with larger data sets.

Don't sacrifice speed when editing large projects. Autodesk Map 3D 2007 responds more quickly to complex edits, even with large data sets. There's no longer a need to slice up projects—or repeat edits across separate sessions—in order to speed up program performance.

RESULT: You save time editing larger projects, without the inefficiencies associated with managing multiple project segments.







6

Powerful, informative representation of data.

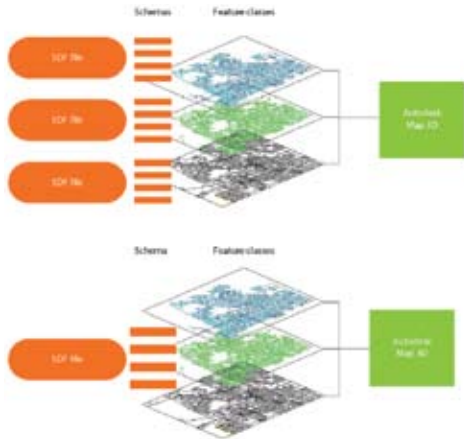
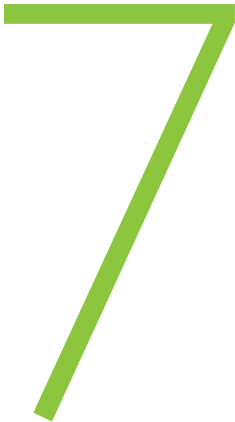
When you need to represent data in a clear, compelling way, Autodesk Map 3D 2007 is your best solution. It lets you stylize your data in a variety of forms, highlighting specific features or information with cartography, theming, dynamic labeling, transparency, raster and vector draping, and more. You choose the rendering approach that best fits your needs.

RESULT: You produce the most professional maps, proposals and reports possible, communicating ideas and information quickly, and clearly.

Sophisticated database features.

Now you can get database-like features without the burden of managing a full-scale database. With unlimited file-size capability and fast performance, the new Spatial Data File (SDF) used by Autodesk Map 3D 2007, becomes your easy-to-manage data repository. Now you can easily classify your spatial data and build relationships between spatial features or elements.

RESULT: You benefit from many of the capabilities of a full-featured database, without the cost and complexity of managing one.

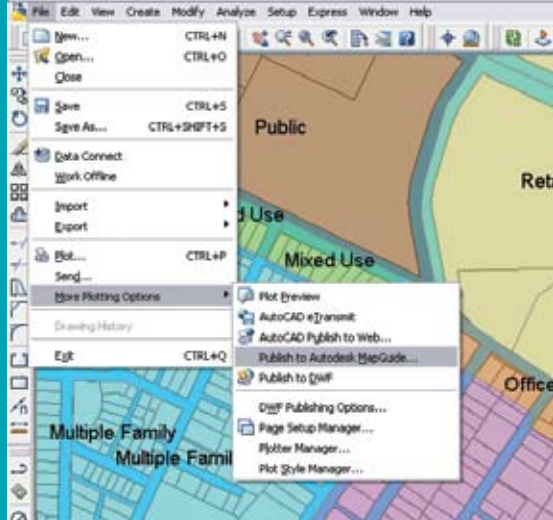


High-impact, photo-realistic rendering.

This is the newest generation of 3D sophistication. Autodesk Map 3D 2007 lets you analyze large-scale surface information—digital elevation models (DEM), digital terrain elevation data (DTED), and ESRI GRID files—for elevation, slope, and aspect. Then use its draping functionality to combine this data with aerial photographs and vector data for stunning, photo-realistic 3D renderings.

RESULT: Your presentations and plans will come to life with amazing accuracy, creating visuals that will have lasting impact on the project, and on your reputation.





Multiple publication and sharing options.

Autodesk Map 3D 2007 lets you stylize information and create maps, then circulate the results in a variety of ways. Distribute them as individual DWF files, or multi-sheet DWF Map Books. You can even publish them to the Internet using Autodesk MapGuide Enterprise 2007 or MapGuide Open Source.

RESULT: When data and map sharing is made easy, it quickly becomes part of your culture, ensuring that regulators, customers, contractors and teams are all operating from the same page.

Take it to the next level.

DWG data organization using defined standards



Insert imagery in common formats



Direct read and write of GIS data

(e.g., Oracle, SDF, ESRI ArcSDE and SHP)



Import and Export multiple data files

(e.g., Microstation DGN, MapInfo TAB)



Native creation and editing of Spatial Data Files (SDF)



Automated data cleaning tools



Multi-User editing environment for drawing (DWG) and database data



Powerful data styling and cartography tools

(e.g., thematic mapping, transparency)



Geo-reference data using built in coordinate system libraries



Direct Web publishing of maps and data



Seamless integration of Civil 3D design data



Database-like management tools



Use imagery in MrSID/ECW/JPG2K and

Digital Elevation Models (DEM)



Use the CAD tool
specifically designed for
GIS professionals.

Integrate CAD & GIS?

Use Map 3D. It's that simple. Visit us online at
www.autodesk.com/engineeringgis to:

- Request a free 30-day trial copy of Map 3D.
- Discover Map 3D Adviser, a great way to interact with the new features.
- Gain access to online demos and blogs.
- Review informative industry white papers.
- Read Map 3D customer stories, and more.

If you have questions, contact your
Autodesk Authorized Value Added
Reseller today. To locate a reseller, visit
www.autodesk.com/reseller or call
1-800-234-0074.

Autodesk, AutoCAD, Autodesk Map, Autodesk MapGuide, and DWF are registered trademarks or trademarks of Autodesk, Inc., in the USA and/or other countries. All other brand names, product names, or trademarks belong to their respective holders. Autodesk reserves the right to alter product offerings and specifications at any time without notice, and is not responsible for typographical or graphical errors that may appear in this document.
© 2006 Autodesk, Inc. All rights reserved.

Part number: 00000000000117443

Autodesk