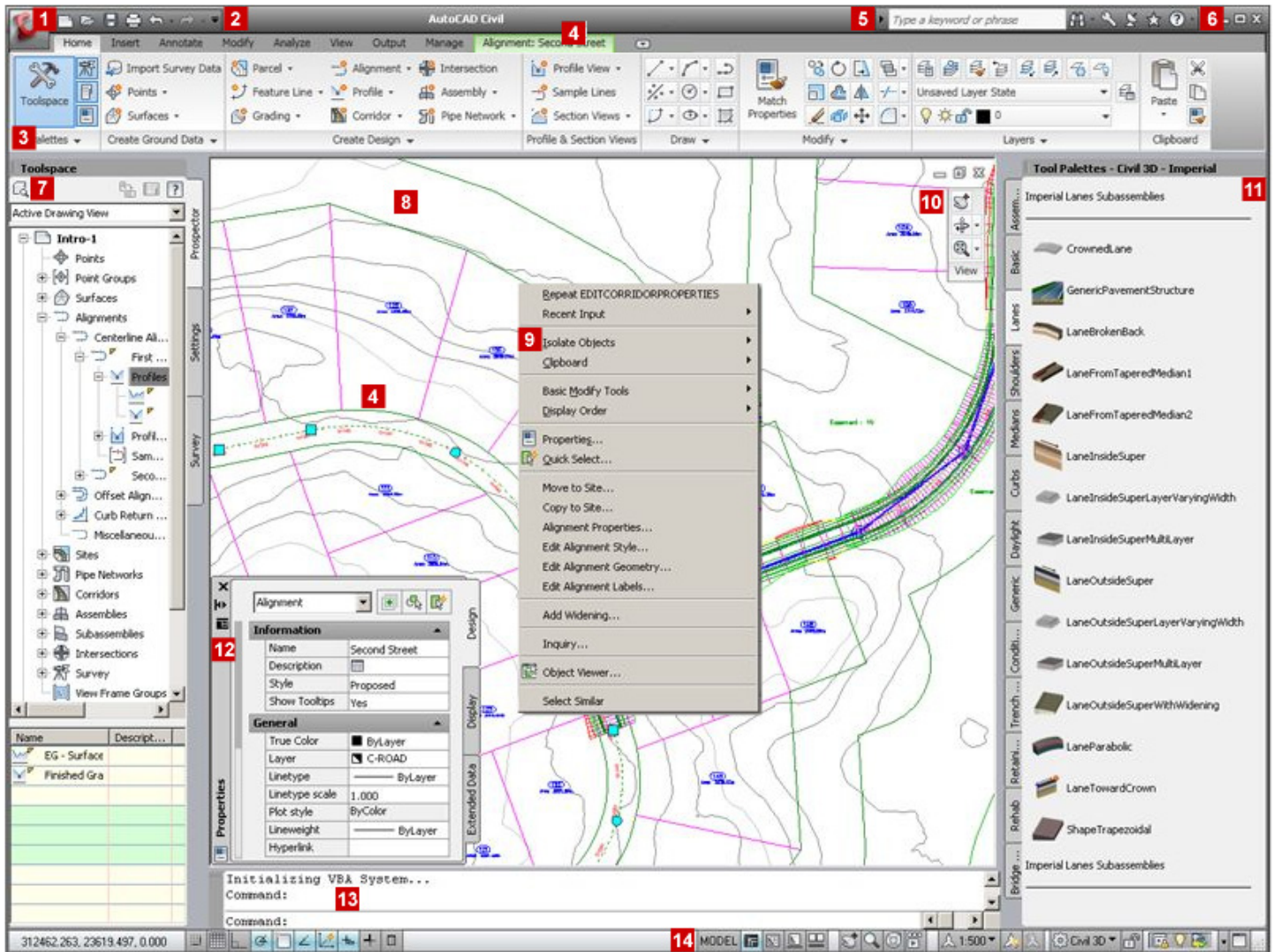


# User Interface Overview



## 1 Application Menu



Application Menu Push Pin



## 2 Quick Access Toolbar

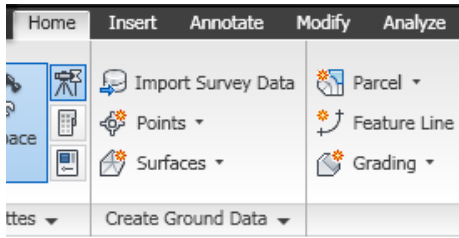


In addition to file management commands such as New, Open, Save, Export, and Close, the application menu includes a keyword search for finding other commands in the application. The application menu also tracks recent documents and open documents. Recent documents include all file types that can be opened, such as DWG, DWT, DWS, and DXF.

Push pins keep a file in the list of recently opened items in the application menu. On the ribbon, push pins are used to keep a ribbon panel open.

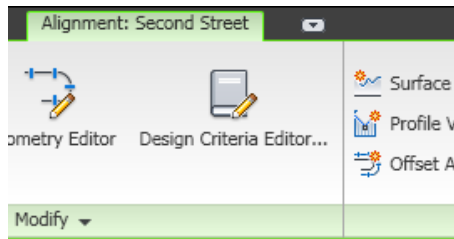
Store commands that you frequently access. By default, you can access New, Open, Save, Plot, Undo, and Redo from the Quick Access Toolbar. Add commands to the Quick Access Toolbar using the More Commands option available by clicking the drop-down button.

### 3 Ribbon



The Ribbon is the central location for accessing commands. It provides easy access to tools through a collection of tabs and panels. Each tab contains multiple panels, and each panel contains multiple tools. Some panels can be expanded to access additional tools.

### 4 Contextual Tab



When you select objects in the drawing area, the ribbon displays a contextual tab that contains only those commands relative to your selection.

### 5 InfoCenter



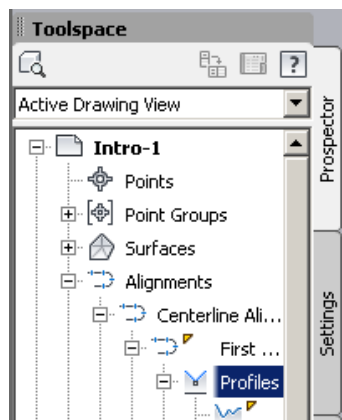
InfoCenter tools let you establish links and settings for automatic updates, notifications, and access to user groups. Enter a keyword to generate a list of links to related learning resources.

### 6 Help Menu



Click the question mark to open the Help files. Click the drop-down arrow to display additional menu choices.

### 7 Toolspace



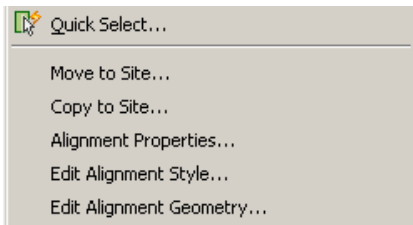
Access the Prospector, Settings, Survey, and Toolbox tabs. Use the Prospector tab to manage design objects. Use the Settings tab to manage object settings, styles, and other drawing items, such as point file formats, description key sets, and grading criteria sets. Use the Survey tab to manage survey projects, data, and settings. Use the Toolbox tab to access Reports Manager and add custom tools.

### 8 Drawing Area



The drawing area is where you create all objects. The objects are most often displayed in a top view. You can change the viewing direction to see objects that have both 2D and 3D components.

## 9 Context Menu



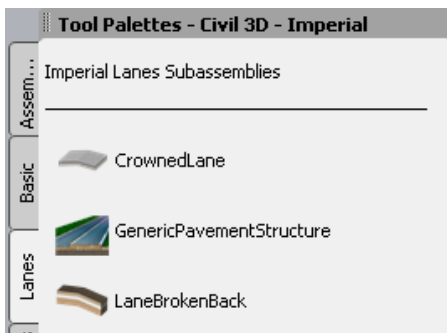
Right-clicking any selected object displays a menu of editing commands specific to that object. For example, right-click an alignment, and edit the alignment, alignment labels, and alignment styles.

## 10 View and Navigation Panel



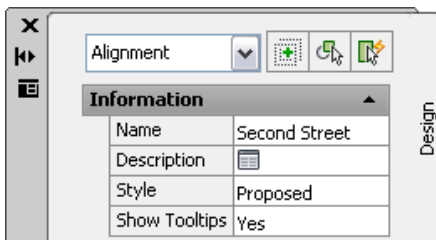
The view and navigation panel displays buttons and controls used for both 2D and 3D viewing.

## 11 Tool Palettes



Organize, share, and place tools that are dragged from your drawing or are provided from Autodesk and third-party developers. Change the properties of any tool palette and organize tool palettes into groups. Default palettes include several groupings of subassemblies.

## 12 Properties Palette



You can use the Properties palette to enter values for objects as you create them or to edit the values of existing objects that you select.

## 13 Command Line

Command:

Execute a command by typing the full command name or command alias at the command prompt and pressing ENTER or SPACEBAR. When Dynamic Input is on and set to display dynamic prompts, you can enter many commands in tooltips near the cursor.

## 14 Application Status Bar



The application status bar displays the coordinate values of the cursor position and provides tools to navigate your drawing. It also lets you view and modify many settings for drawing aids, such as object snap settings that help you to connect precisely to existing objects. Other options let you switch between model space and paper space, switch between open drawings, add movement and transitions to a saved view, maximize the drawing area, and minimize interface components. The Application Status Bar Menu drop-down, on the far right, lets you control which of these options and settings are displayed.