

Autodesk Infrastructure Map Server 2013

New features & APIs

Daniel Du
Developer Consultant

Daniel Du

Autodesk Developer Network



Daniel Du has been with Autodesk since 2008, focusing on providing programming support, consulting, training and evangelism to external developers. He is based in Autodesk Beijing office. He started his career from an institute and gained more than 10 years' experiences on software design and development domain. His expertise spreads across application development for Autodesk Infrastructure Map Server (former MapGuide), AutoCAD Map 3D, AutoCAD Civil 3D and other Infrastructure Modeling Technologies from Autodesk.

Today's Agenda

- Highlights of new Features and Functionalities.
- API Enhancements
- Create web applications based on AIMS 2013
- Migration repository and applications to AIMS 2013

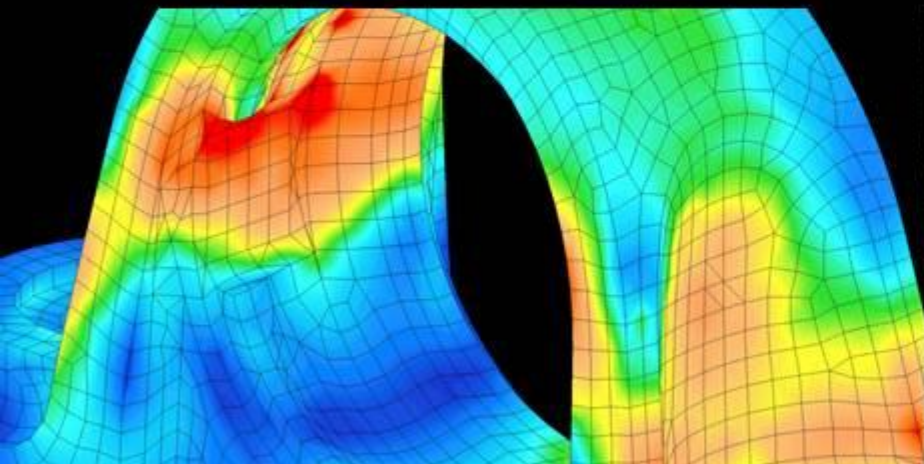


Image courtesy of Harmonix Music Systems, Inc.

Autodesk Infrastructure Map Server 2013

Focus Area :



Make Infrastructure Map Server
offering **relevant to all
infrastructure products**
(Map 3D, Civil 3D, Utility Design)

Modernize Infrastructure Map
Server Author and Admin

Fit & Finish

Support for DWG on Server

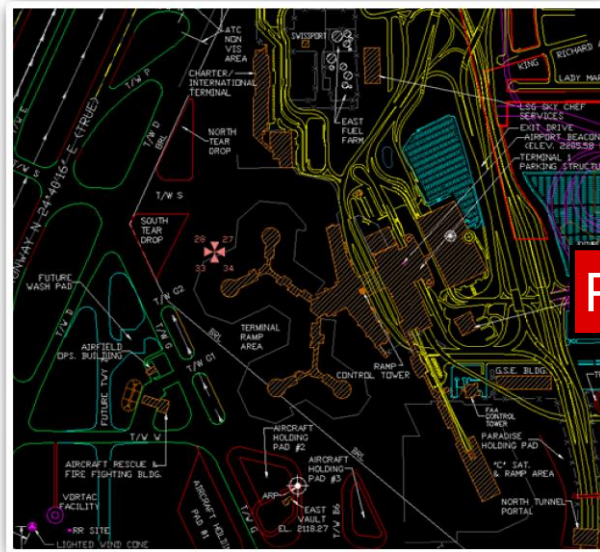
100% Data and Visual Fidelity from DWG



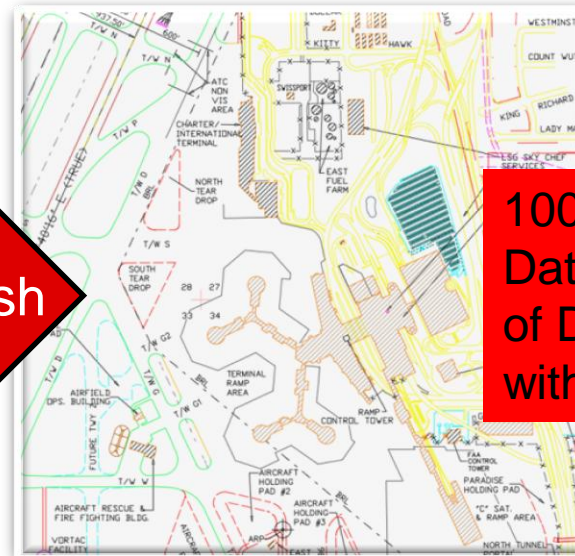
Make Infrastructure Map Server offering **relevant to all infrastructure products** (Map 3D, Civil 3D, Utility Design)

- Add domain data models and workflows via extensions to core server
- Share domain design drawings (DWGs) natively via the Web [\(Play Video\)](#)
- Initial focus on Map 3D-based DWG data (including object data)
- 100% Data and Visual Fidelity from DWG

Desktop



Server



Publish

100% Visual and
Data Fidelity
of DWG files
without Conversion

Modernize Author and Admin

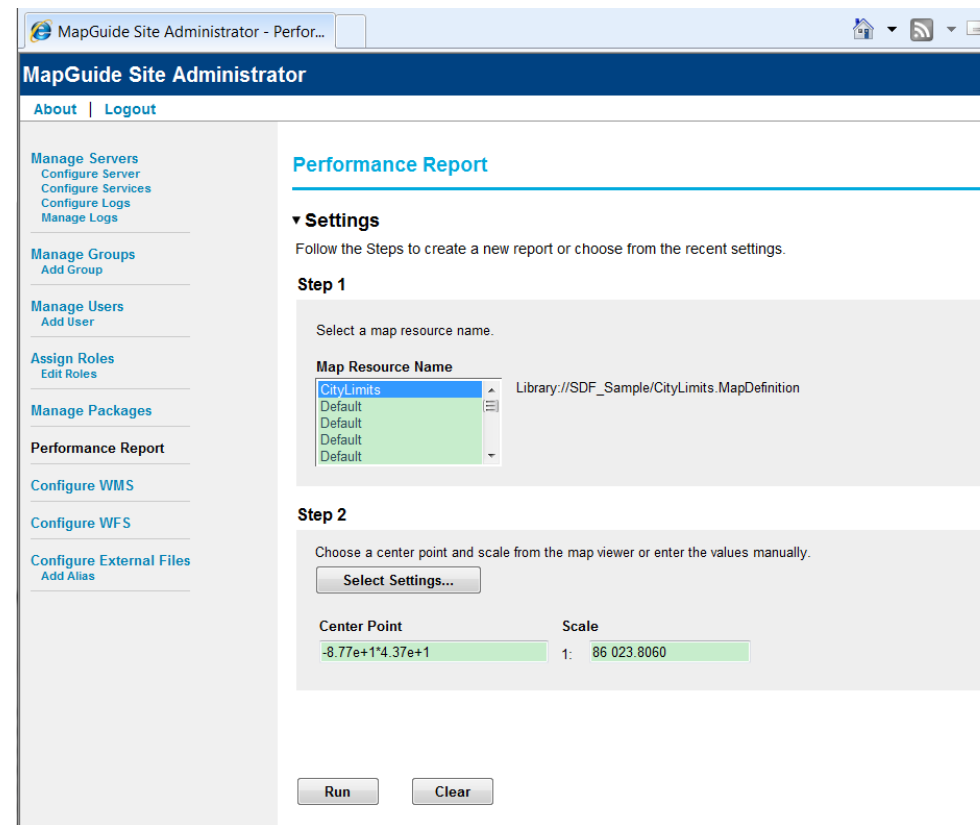
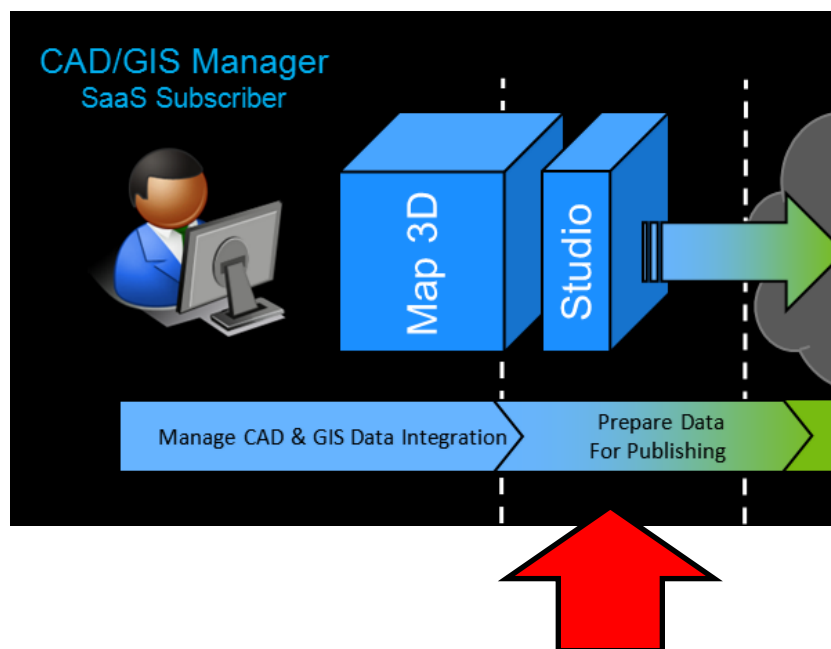
Authoring and Administration via the Browser



Modernize Infrastructure Map Server “Author and Admin” components

- Profiling API + Reports on Server performance

[Play Video](#)



Application Extension On SQL Server

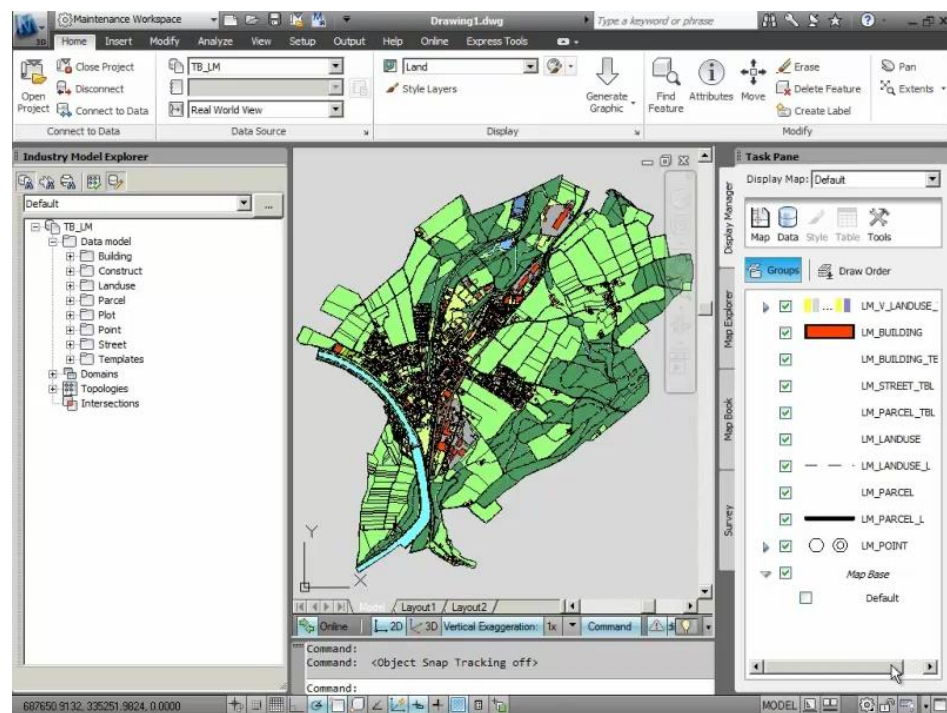
Extend Industry Model to SQL Server

Industry Model on SQL Server



- New option, store industry model in SQL Server Database

[Play Video](#)



Publish

Connect to Enterprise Industry Model

Map 3D User

User name: *

Administrator

Password:

Map 3D System or Main User

Microsoft SQL Server

sa

Password: *

Database: *

tbsys_spark

Server Name: *

Login Help Options <<

3rd Party Components

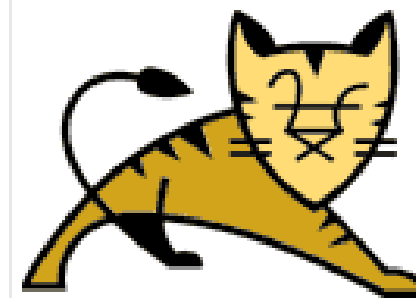
CR fixes, security update of 3rd party components

Every release we need to review and update our 3rd party components :

Upgrade Apache to 2.2.21

Upgrade Tomcat to 7.0.21

Upgrade PHP to 5.3.8



Apache
Tomcat

Browser Support

Support the latest browsers

This is the list of the latest supported and expected Web browsers

Browser	Supported in AIMS2012	Supported in AIMS2013
Microsoft Internet Explorer	7, 8, 9 Beta	8, 9
Mozilla Firefox	3.6, 4.0 Beta	3.6, 4.0
Apple Safari	4, 5	4,5
Google Chrome	8, 9	10, 11



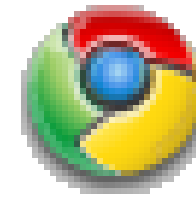
Internet
Explorer



Apple®
Safari™



Mozilla
Firefox



Google
Chrome

Planning, Analysis and Publishing

Autodesk Infrastructure Map Server 2013

Mobile viewer extension

- Access your data and maps from the field via interfaces designed for Apple® iPhone® and iPad® devices
- Use powerful multi-touch navigation to easily zoom, pan, and retrieve information from your maps



Planning, Analysis and Publishing

Autodesk Infrastructure Map Server 2013

GeoREST extension

- An Open Source project with direct support for MapGuide Enterprise, MapGuide Open Source and FDO Feature
- A new method of interfacing with MapGuide Server via standard HTML/CSS and template files
- Integrate with AIMS

2323 ROSSTOWN ROAD - PROPERTY REPORT

[Home](#) > [Data](#) > [Property](#) > 2323 ROSSTOWN ROAD

GENERAL INFORMATION		PARCEL MAP
Address:	2323 ROSSTOWN ROAD, NANAIMO, BC	
Folio:	05536.130	
Plan:	27484	
Size:	.29 ACRES	
Legal	LOT 7, SECTION 18 AND 19.	

NAME	HTML	FEEDS	KML	SHAPE	GOOGLE MAPS
Bid Opportunities					
Budget Forum					
Building Permit Applications					
Building Permit Statistics					
Building Permit Statistics					
Building Permit Applications					

EXTENDED INFORMATION

2323 ROSSTOWN ROAD
LOT 7, SECTION 18 AND 19
NANAIMO, BC

Other improvements

Fix and Finish

Support IPv6

MapGuide baselayer group + commercial map services(Google Maps..)

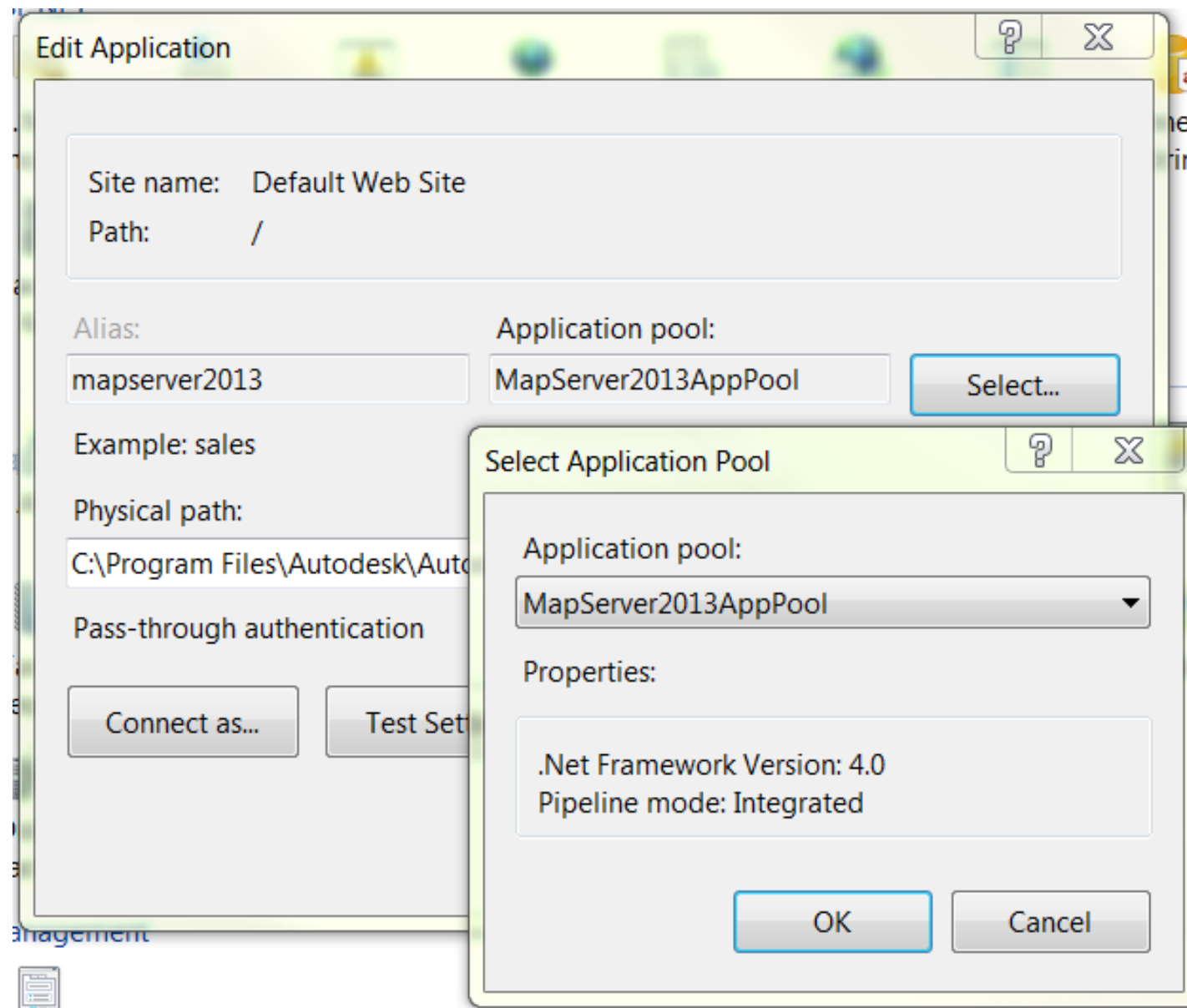
Update FDO to 3.7

100 + CRs fixed in Jedi release.

Other improvements

Fix and Finish

Use ASP.NET 4.0



API Enhancements in AIMS 2013

New Profiling API in AIMS

MgProfilingService

ProfileRenderDynamicOverlay

Profile the process of rendering all dynamic layers in the specified MgMap to a dynamic overlay image with a transparent background.

```
virtual MgByteReader* ProfileRenderDynamicOverlay(  
    MgMap* map,  
    MgSelection* selection,  
    MgRenderingOptions* options);
```

New Profiling API in AIMS

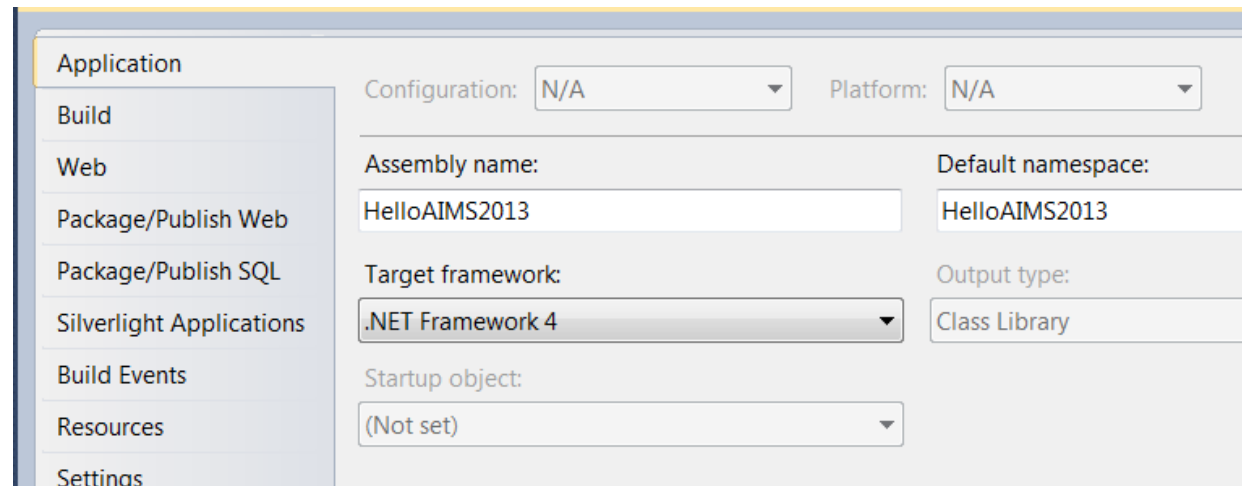
MgProfilingService

```
virtual MgByteReader* ProfileRenderMap(  
    MgMap* map,  
    MgSelection* selection,  
    MgCoordinate* center,  
    double scale,  
    INT32 width,  
    INT32 height,  
    MgColor* backgroundColor,  
    CREFSTRING format,  
    bool bKeepSelection);
```

Profile the process of rendering a MgMap to the requested image format with specified center point and scale.

Demo – Create WebApp based on AIMS2013

- IDE
 - Visual Studio 2010 + .net framework 4.0



Migration to AIMS 2013

- Repository migration
 - Batch files
 - In <Autodesk Infrastructure Map Server 2013\RepositoryAdmin>
 - BackUpOfflineRepositories.bat/BackUpOnlineRepositories.bat
 - RestoreColdBackupRepositories.bat/RestoreHotBackupRepositories.bat
- Package management tool
 - Packages are saved in<Autodesk Infrastructure Map Server 2013>\Packages

Make Package

You can package a section of this site repository and store in the package folder for moving to another site server. Enter a repository folder path. Everything below that for [Configure Packages directory](#).

Folder name (e.g. Library//<root_folder>/<folder1>):

Resulting package name:

Load Package

Packaged resources or data in the package folder can be loaded to this site server. [Configure Packages directory](#).


Package Name	Size (bytes)	Status
<input checked="" type="radio"/> From_10-20-2-45_20110113_HN.mgp	1,898,128	LOAD SUCCEEDED: BEICNU0342P14.ads.autodesk.com successfully loaded pack
<input type="radio"/> From_10-20-2-45_20110113_Symbol.mgp	181,331	LOAD SUCCEEDED: BEICNU0342P14.ads.autodesk.com successfully loaded pack
<input type="radio"/> From_SiteServer_20100908_Library.mgp	24,120,954	LOAD SUCCEEDED: BEICNU0342P14.ads.autodesk.com successfully loaded pack
<input type="radio"/> From_SiteServer_20101012_MapsWithStyle.mgp	15,385,511	MAKE SUCCEEDED: BEICNU0342P14.ads.autodesk.com successfully made packa
<input type="radio"/> From_SiteServer_20101206_ThresholdTest.mgp	29,339	LOAD SUCCEEDED: BEICNU0342P14.ads.autodesk.com successfully loaded pack
<input type="radio"/> From_SiteServer_20110210_HN.mgp	1,892,943	MAKE SUCCEEDED: BEICNU0342P14.ads.autodesk.com successfully made packa
<input type="radio"/> Library.mgp	19,700,029	LOAD SUCCEEDED: BEICNU0342P14.ads.autodesk.com successfully loaded pack
<input type="radio"/> MapsWithStyle.mgp	15,376,714	LOAD SUCCEEDED: BEICNU0342P14.ads.autodesk.com successfully loaded pack

Migration to AIMS 2013

- Applications
 - .net framework: asp.net 2.0 → asp.net 4.0
 - Replace the dlls with new version
 - Replace webconfig.ini with new version
 - Refer to map viewer URL of new version
 - Rebuild

Blogs

- <http://adndevblog.typepad.com/infrastructure/>



Infrastructure Modeling DevBlog

The resource for software developers working with Civil 3D, Map 3D and AIMS and other Autodesk Infrastructure Modeling technology.

Home Subscribe Follow Useful Links Autodesk

IM DEVBLOGGERS

[Daniel Du](#)
[Partha Sarkar](#)
[Gopinath Taget](#)
[Marat Mirgaleev](#)

APRIL 2012

Sun	Mon	Tue	Wed	Thu	Fri	Sat
1	2	3	4	5	6	7
8	9	10	11	12	13	14
15	16	17	18	19	20	21
22	23	24	25	26	27	28
29	30					

AUTODESK BLOGS

ADN DevBlog - AutoCAD
Our DevBlog for AutoCAD and other platform technology APIs.

ADN DevBlog - Infrastructure Modeling
Our DevBlog for Infrastructure Modeling technology APIs.


Daniel Du

04/18/2012

Activate hyperlink by double click in Ajax viewer of AIMS 2013

By [Daniel Du](#)

As you know, it is possible to set up a hyper link for features, and open a link by ctrl+click. For those who does not know, you can open a layer by double clicking the layer from Site Explorer of Infrastructure Studio, and click the ... button to set a hyperlink expression for "URL activated for feature":



With this setting, user can activate an URL by clicking one feature while pressing CTRL key.

But many users, especially users who are used to MapGuide 6.5, are willing to change this behavior to double click, it is possible? The answer is yes. here is a [thread](#) on MapGuide Open Source discussion group,, and it applies to AIMS 2013 as well. I presume it works for other versions of MapGuide Enterprise or AIMS with or without minor changes.

SEARCH

RECENT POSTS

[COM References on Civil 3D 2013](#)

[Using SampleElevations\(\) in AutoCAD Civil 3D 2013 .NET API](#)

[Activate hyperlink by double click in Ajax viewer of AIMS 2013](#)

[Toggle visibility of Layer in Fusion does not work?](#)

[Make full use of tooltip in Autodesk Infrastructure Man](#)

Questions and Answers



Photographs by David Wakely

Autodesk®

Autodesk, AutoCAD, Alias, Autodesk Inventor, Inventor, Maya, Mudbox, and 3ds Max are registered trademarks or trademarks of Autodesk, Inc., and/or its subsidiaries and/or affiliates in the USA and/or other countries. Academy Award and Oscar are registered trademarks of the Academy of Motion Picture Arts and Sciences. mental ray is a registered trademark of mental images GmbH licensed for use by Autodesk, Inc. All other brand names, product names, or trademarks belong to their respective holders. Autodesk reserves the right to alter product and services offerings, and specifications and pricing at any time without notice, and is not responsible for typographical or graphical errors that may appear in this document.

© 2011 Autodesk, Inc. All rights reserved.